

Aspergillus section *Versicolores*: nine new species and multilocus DNA sequence based phylogeny

Zeljko Jurjević¹, Stephen W. Peterson², and Bruce W. Horn³

¹EMSL Analytical, Inc., 200 Route 130 North, Cinnaminson, NJ 08077

²Bacterial Foodborne Pathogens and Mycology Research Unit, National Center for Agricultural Utilization Research, Agricultural Research Service, U.S. Department of Agriculture, 1815 North University Street, Peoria, Illinois 61604 USA; corresponding author email: Stephen.peterson@ars.usda.gov

³National Peanut Research Laboratory, Agricultural Research Service, U.S. Department of Agriculture, P.O. Box 509, Dawson, GA 39842-0509

Abstract: α -tubulin, calmodulin, internal transcribed spacer and partial *lsu-rDNA*, RNA polymerase 2, DNA replication licensing factor *Mcm7*, and pre-rRNA processing protein *Tsr1* were amplified and sequenced from numerous isolates belonging to *Aspergillus* sect. *versicolor*. The isolates were analyzed phylogenetically using the concordance model to establish species boundaries. *Aspergillus austroafricanus*, *A. creber*, *A. cvjetkovicii*, *A. fructus*, *A. jensenii*, *A. puulaauensis*, *A. subversicolor*, *A. tennesseensis* and *A. venenatus* are described as new species and *A. amoenus*, *A. protuberus*, *A. sydowii*, *A. tabacinus* and *A. versicolor* are accepted as distinct species on the basis of molecular and phenotypic differences. PCR primer pairs used to detect *A. versicolor* in sick building syndrome studies have a positive reaction for all of the newly described species except *A. subversicolor*.

Key words:

Aspergillus amoenus
Aspergillus austroafricanus
Aspergillus creber
Aspergillus cvjetkovicii
Aspergillus fructus
Aspergillus jensenii
Aspergillus protuberus
Aspergillus puulaauensis
Aspergillus subversicolor
Aspergillus sydowii
Aspergillus tabacinus
Aspergillus tennesseensis
Aspergillus venenatus
Aspergillus versicolor
 concordance analysis
 phylogeny
 systematics

Article info: Submitted: 17 January 2012; Accepted: 7 June 2012; Published: 21 June 2012.

INTRODUCTION

Aspergillus section *Versicolores* was originally erected as the *Aspergillus versicolor* group by Thom & Church (1926) and was subsequently revised by Thom & Raper (1945) to contain four species. Raper & Fennell (1965) revised the genus *Aspergillus* and accepted 18 species in the *A. versicolor* group. Gams *et al.* (1985) formalized the sectional taxonomy of Raper & Fennell's (1965) groups. Using scanning electron microscopy (SEM), Kozakiewicz (1989) examined conidial surface ornamentation of most species of the section and removed seven species from section *Versicolores*. Klich (1993) revised the section based on morphological and other characteristics and accepted the seven species previously removed by Kozakiewicz (1989) from section *Versicolores*. Peterson (2008) accepted four phylogenetically distinct species in the section based on multilocus DNA sequence analysis, placing the other 14 species in different clades of *Aspergillus*.

Aspergillus versicolor is the most widely reported and studied species in section *Versicolores*. It has been isolated from soil (Domsch *et al.* 1980), indoor environments (Samson *et al.* 2001, Shelton *et al.* 2002, Engelhart *et al.* 2002, Amend *et al.* 2010, Anderson *et al.* 2011), various foods and feeds (Pitt & Hocking 2009) and hypersaline water (Kis-Papo *et al.* 2003, Mbata 2008), and is associated with many health issues of humans and animals (Jussila 2003, Perri *et al.* 2005, Baddley *et al.* 2009, Edmondson *et al.* 2009, Pitt & Hocking 2009, Moreno & Arenas 2010). It is a producer of the mycotoxin sterigmatocystin that is a precursor of a fatoxin B₁ (Mills & Abramson 1986, Tuomi *et al.* 2000, Nielsen 2003, Veršilovskis & Saeger 2010).

Environmental isolates of section *Versicolores* species exhibit great variation in macro-phenotypic ones but few differences in micro-phenotypic characters (Domsch *et al.* 1980, Klich 2002, Raper & Fennell 1965, Thom & Church 1926, Vesonder & Horn 1985), leading us to conduct a DNA-based phylogenetic study. to determine the limits of

© 2012 International Mycological Association

You are free to share - to copy, distribute and transmit the work, under the following conditions:

Attribution: You must attribute the work in the manner specified by the author or licensor (but not in any way that suggests that they endorse you or your use of the work).

Non-commercial: You may not use this work for commercial purposes.

No derivative works: You may not alter, transform, or build upon this work.

For any reuse or distribution, you must make clear to others the license terms of this work, which can be found at <http://creativecommons.org/licenses/by-nc-nd/3.0/legalcode>. Any of the above conditions can be waived if you get permission from the copyright holder. Nothing in this license impairs or restricts the author's moral rights.

variation within species, we amplified and sequenced DNA from 6 loci and used concordance analysis to identify species boundaries (Dettman *et al.* 2003) within section *Versicolores*. The species described and accepted are monophyletic.

MATERIALS AND METHODS

Fungal isolates

The provenance of fungal isolates examined in this study is detailed in Table 1 and these cultures are available from the Agricultural Research Service Culture Collection (NRRL), Peoria, Illinois (<http://nrml.ncaur.usda.gov>).

Culture methods

Cultures were grown on Czapek yeast extract agar (CYA) at 5 °C, 25 °C, and 37 °C and on malt extract agar (MEA), CY20S, M40Y and M60Y, all at 25 °C for 10 d in darkness (Pitt 1980, Klich 2002). M40Y contained 2 % malt extract, 0.5 % yeast extract and 40 % sucrose; M60Y contained 2 % malt extract, 0.5 % yeast extract and 60 % sucrose. Colony diameters and appearance were recorded and photographs were made from 10-d culture plates incubated at 25 °C. Color names are from Ridgway (1912) and are referred to with plate number, e.g. R45.

Microscopy

Microscopic examination was performed by teasing apart a small amount of mycelium in a drop of 0.1 % Triton X-100 and examining the preparation under bright field or DIF illumination. Additional microscopic samples were made by gently pressing a ca 20 × 5 mm piece of transparent tape onto a colony, rinsing the tape with one or two drops of 70 % ethanol and mounting the tape in lactic acid with fuchsin dye. A Leica DM 2500 microscope with bright field, phase contrast and DIF contrast optics was used to view the slides. The Spot camera with spot imaging software was mounted on the microscope and used for photomicrography. A Nikon digital SLR camera with D70 lens was used for colony photography. Photographs were resized and fitted into plates with Microsoft PowerPoint 2003 or Adobe Photoshop.

DNA methods

Conidia from agar slant cultures were used to inoculate 125-mL Erlenmeyer flasks containing 25 mL of malt extract broth. Cultures were grown on a rotary platform (200 rpm) for 2–3 d at 25 °C. Biomass was collected by vacuum filtration, and then frozen and freeze-dried in microfuge tubes. Dry mycelium was ground to a powder, rehydrated with CTAB buffer and extracted with chloroform; the phases were separated by centrifugation and DNA was precipitated from the aqueous phase with an equal volume of isopropanol. Total nucleic acids were collected by centrifugation, the pellet was rinsed with 70 % ethanol, and the nucleic acids were dissolved in 100 µL sterile deionized water.

DNA was diluted ca 1:100 with sterile deionized water for use in amplifications. α -tubulin (*BT2*), calmodulin (*CF*), ITS and partial *lsu*-rDNA (*ID*), RNA polymerase 2 (*RPB2*), DNA replication licensing factor (*Mcm7*), and pre-rRNA processing protein (*Tsr1*) were amplified with primers used

by Peterson *et al.* (2010). Standard buffer and conditions were used with a thermal profile of 95 °C for 2 min followed by 35 cycles of 96 °C for 30 sec; 51 °C for 60 sec; 72 °C for 60 sec; and a final extension phase of 72 °C for 5 min. Occasionally, multiple amplification bands were obtained and a higher annealing temperature was used to obtain single amplification bands. DNA sequencing was performed on both template strands using dye terminator technology (v3.1) and an ABI 3730 sequencer, both from Applied Biosystems (<http://www.appliedbiosystems.com/>). Raw sequences (bi-directional) were corrected using Sequencher (<http://www.genecodes.com/>). Corrected sequences were aligned for phylogenetic analysis using CLUSTALW (Thompson *et al.* 1994). Sequences were deposited in GenBank as accessions JN853798–JN854131, EF652176, EF652178, EF652185–EF652187, EF652196, EF652203, EF652209–EF652211, EF652214–EF652216, EF652226, EF652264, EF652266, EF652273–EF652275, EF652284, EF652291, EF652297–EF652299, EF652302–EF652304, EF652314, EF652352, EF652354, EF652361–EF652363, EF652372, EF652379, EF652385–EF652387, EF652390–EF652392, EF652402, EF652440, EF652442, EF652449–EF652451, EF652460, EF652467, EF652473–EF652475, EF652478–EF652480, EF652490 and JQ301889–JQ301896.

Parsimony analysis was conducted using PAUP* 4.0b10 (Swofford 2003). For single-locus data sets, the criterion was parsimony, addition order was random (5000 replications), branch swapping was NNI (nearest neighbor interchange) and max trees was set at 5000. The set of trees generated was used as the starting point for parsimony analysis with addition order “as is” and TBR branch swapping. Bootstrap analysis was conducted with “as is” addition order and TBR branch swapping for 1000 replications.

Bayesian posterior probabilities were calculated using MrBayes 3.12 (Huelsenbeck & Ronquist 2001, Ronquist & Huelsenbeck 2003). The *Mcm7*, *Tsr1* and *RPB2* data sets included only protein-coding sequences and each data set was partitioned into codon positions 1, 2, and 3. The *BT2* and *CF* loci included protein-coding and intron regions and the data were partitioned into intron and exon data. A GTR (general time-reversible) model was used with a proportion of invariant sites and a gamma-shaped distribution of rates across the sites. Markov chain Monte Carlo (MCMC) analysis was conducted for up to 5×10^6 generations until the chains converged.

Concordance analysis was based on the exclusionary principle of Baum & Shaw (1995) and the genealogical concordance phylogenetic species recognition concepts of Taylor *et al.* (2000). Clades were recognized as independent evolutionary lineages if 1) the clade was present in the majority of single-locus genealogies (majority rule consensus) or 2) if a clade was strongly supported by both parsimony and Bayesian analysis in at least one locus, and was not contradicted by another strongly supported locus (Dettman *et al.* 2003). Strong support was assessed as >70 % bootstrap and >0.95 posterior probability (Dettman *et al.* 2003).

The primers used for identification of *A. versicolor* in a PCR amplification (Dean *et al.* 2005) were tested using the primer sequences and amplification thermal profile recommended, but in a uniplex rather than multiplex amplification system (Dean *et al.* 2005).

Table 1. Provenance of fungal isolates used.

NRRL number	Provenance
<i>Aspergillus amoenus</i> MycoBank MB250654	
226	USA: isol. ex mammary gland, 1913.
236	Germany: Munster, isol. ex a <i>Berberis</i> sp. fruit, 1930, <i>M. Roberg</i> .
658	UK: isol. ex brined meat, 1929, <i>G. A. Ledingham</i> .
4838	Equivalent to NRRL 236, received from Centraalbureau voor Schimmelcultures, 1962, ex-type.
35600	USA: Hawaii, Kapuka Pauula, isol. ex the basidiomata of <i>Gandoderma australe</i> , 2005, <i>D. T. Wicklow</i> .
A-23228	India: Karnataka, isol. ex coffee berry, 1978, <i>B. Muthappa</i> .
<i>Aspergillus asperescens</i> Stolk MycoBank MB292835	
4770	Ex-type, out-group species.
<i>Aspergillus austroafricanus</i> sp. nov. , MycoBank MB800597	
233	South Africa: Capetown, unknown, 1922, sent by <i>V. A. Putterill</i> , ex-type.
<i>Aspergillus creber</i> sp. nov. , MycoBank MB800598	
231	South Africa: Capetown, unknown, 1922, sent by <i>V. A. Putterill</i> .
6544	Atlantic Ocean: isol. ex a floating tar ball, 1979, <i>A. Wellman</i> .
25627	Japan: Ibaraki, isol. ex tea field soil, 1996, <i>T. Goto</i> .
58583	USA: Pennsylvania, isol. ex indoor air sampler, 2008, <i>Z. Jurjevic</i> .
58584	USA: California, isol. ex indoor air sample, 2008, <i>Z. Jurjevic</i> .
58587	USA: California, isol. ex indoor air sample, 2008, <i>Z. Jurjevic</i> .
58592	USA: California, isol. ex indoor air sample, 2008, <i>Z. Jurjevic</i> , ex-type.
58597	USA: New Jersey, isol. ex indoor air sample, 2008, <i>Z. Jurjevic</i> .
58601	USA: New Jersey: isolated from indoor air sample, 2009, <i>Z. Jurjevic</i> .
58606	USA: Pennsylvania, isol. ex indoor air sample, 2009, <i>Z. Jurjevic</i> .
58607	USA: Pennsylvania, isol. ex indoor air sample, 2009, <i>Z. Jurjevic</i> .
58612	USA: New Jersey, isol. ex indoor air sample, 2009, <i>Z. Jurjevic</i> .
58670	USA: New Jersey, isol. ex indoor air sample, 2009, <i>Z. Jurjevic</i> .
58672	USA: Georgia, isol. ex indoor air sample, 2009, <i>Z. Jurjevic</i> .
58673	USA: Georgia, isol. ex indoor air sample, 2009, <i>Z. Jurjevic</i> .
58675	USA: Ohio, isol. ex indoor air sample, 2009, <i>Z. Jurjevic</i> .
<i>Aspergillus cvjetkovicii</i> sp. nov. , MycoBank MB800599	
227	USA: New Jersey, isol. ex soil, 1915, <i>G. W. Wilson</i> , ex-type.
230	China: isol. ex soy sauce, 1917, <i>Round</i> .
4642	Unknown: sent to NRRL, 1969, <i>D. I. Fennell</i> as WB4642.
58593	USA: California, isol. ex indoor air sample, 2008, <i>Z. Jurjevic</i> .
<i>Aspergillus fructus</i> sp. nov. , MycoBank MB800600	
239	USA: California, isol. ex date fruit, 1939, <i>Bliss</i> , ex-type.
241	Unknown: isol. ex pomegranate fruit, 1916, <i>L. McCulloch</i> .
<i>Aspergillus jensenii</i> sp. nov. , MycoBank MB800601	
225	UK: unknown, 1913, sent to C. Thom by <i>Dade</i> .
235	UK: London, isol. ex paraffin, 1930, <i>H. Raistrick</i> .
240	USA: New York, Ithaca, isol. ex the rhizosphere of pepper plants, 1911, <i>C. N. Jensen</i> , sent to C. Thom by Whetzel as type strain of <i>A. globosus</i> .
58582	USA: Montana, isol. ex indoor air sample, 2008, <i>Z. Jurjevic</i> .
58600	USA: Montana, isol. ex indoor air sample, 2008, <i>Z. Jurjevic</i> , ex-type.
58671	USA: Pennsylvania, isol. ex indoor air sample, 2009, <i>Z. Jurjevic</i> .
58674	USA: Ohio, isol. ex indoor air sample, 2009, <i>Z. Jurjevic</i> .
<i>Aspergillus multicolor</i> Sappa MycoBank MB292849	
4775	Ex-type, out-group species.

Table 1. (Continued).

NRRL number	Provenance
<i>Aspergillus protuberus</i> MycoBank MB326650	
661	UK: isol. ex brined meat, 1929, <i>G. A. Ledingham</i> .
3505	Yugoslavia, isol. ex rubber coated electrical cables, ca 1968, ex-type.
58613	USA: New Jersey, isol. ex indoor air sample, 2009, <i>Z. Jurjevic</i> .
58747	USA: New Jersey, isol. ex indoor air sample, 2009, <i>Z. Jurjevic</i> .
58748	USA: New Jersey, isol. ex indoor air sample, 2009, <i>Z. Jurjevic</i> .
58990	USA: Connecticut, isol. ex indoor air sample, 2009, <i>Z. Jurjevic</i> .
58991	USA: Connecticut, isol. ex indoor air sample, 2009, <i>Z. Jurjevic</i> .
<i>Aspergillus puulaauensis</i> sp. nov. , MycoBank MB800602	
35641	USA: Hawaii, Pu'u la'au Highway 200, isol. ex dead hardwood branch, 2003, <i>D. T. Wicklow</i> , ex-type.
58602	USA: West Virginia, isol. ex indoor air sample, 2009, <i>Z. Jurjevic</i> .
62124	USA: Hawaii, mesic mountain forest, isol. ex basidiomata of <i>Inonotus</i> sp., 2003, <i>D. T. Wicklow</i> .
62516	Canada: Alberta, isol. ex air sample in bee house, ca 1990, <i>S. P. Abbot</i> , equivalent to UAMH 7651.
<i>Aspergillus subversicolor</i> sp. nov. , MycoBank MB800603	
58999	India: Karnataka, isol. ex coffee berry, 1970, <i>B. Muthappa</i> , ex-type.
<i>Aspergillus sydowii</i> MycoBank MB279636	
250	Unknown: prior to 1930, sent to C. Thom by <i>M. Swift</i> .
254	USA: Georgia, Waycross, clinical isolate, 1940, <i>M. M. Harris</i> .
4768	USA: California, isol. ex soil, 1969.
62450	Thailand: isol. ex dead plant stem, 1977, <i>E. G. Simmons</i> .
<i>Aspergillus tabacinus</i> MycoBank MB539544	
659	UK: isol. ex brined meat, 1929, <i>G. A. Ledingham</i> .
4791	Unknown: isol. ex tobacco, 1934, <i>Y. Nakazawa</i> , ex-type.
5031	Unknown: type isolate of <i>A. versicolor</i> var. <i>magnus</i> Sasaki, received from IFO, 1962.
62481	Nepal: Kathmandu, isol. ex maize, 1977.
<i>Aspergillus tennesseensis</i> sp. nov. , MycoBank MB800604	
229	Unknown: sent to C. Thom, 1917, by <i>R. Thaxter</i> .
234	USA: Maryland, Beltsville, isol. ex chestnut seed, 1927, <i>C. Thom</i> .
13150	USA: Tennessee, isol. ex toxic dairy feed, 1984, <i>B. W. Horn</i> , ex-type.
13152	USA: Tennessee, isol. ex toxic dairy feed, 1984, <i>B. W. Horn</i> .
<i>Aspergillus venenatus</i> sp. nov. , MycoBank MB800605	
13147	USA: Tennessee: isolated from toxic dairy feed, 1984, <i>B. W. Horn</i> , ex-type.
13148	USA: Tennessee, isol. ex toxic dairy feed, 1984, <i>B. W. Horn</i> .
13149	USA: Tennessee, isol. ex toxic dairy feed, 1984, <i>B. W. Horn</i> .
62457	USA: Missouri, isol. ex corn, 1989, <i>D. T. Wicklow</i> .
<i>Aspergillus versicolor</i> MycoBank MB172159	
238	USA: isol. ex unrecorded substrate, 1935, <i>V. K. Charles</i> , ex-type.
5219	South Africa: Pretoria, received 1970, from <i>J. P. van der Walt</i> .
13144	USA: Tennessee, isol. ex toxic dairy feed, 1984, <i>B. W. Horn</i> .
13145	USA: Tennessee, isol. ex toxic dairy feed, 1984, <i>B. W. Horn</i> .
13146	USA: Tennessee, isol. ex toxic dairy feed, 1984, <i>B. W. Horn</i> .
<i>Aspergillus</i> species, undescribed	
530	East Indies: isol. ex natural rubber, 1938, <i>Shumard</i> .
13151	USA: Tennessee: isol. ex toxic dairy feed, 1984, <i>B. W. Horn</i> .

RESULTS

Phylogenetic analysis of sequence data

Sixteen independent evolutionary lineages were detected

using both criteria for concordance (Dettman *et al.* 2003). The accepted species (Peterson 2008) *A. versicolor*, *A. tabacinus*, *A. amoenus*, *A. protuberus* and *A. sydowii* each were identified as independent lineages (Fig. 1). Four

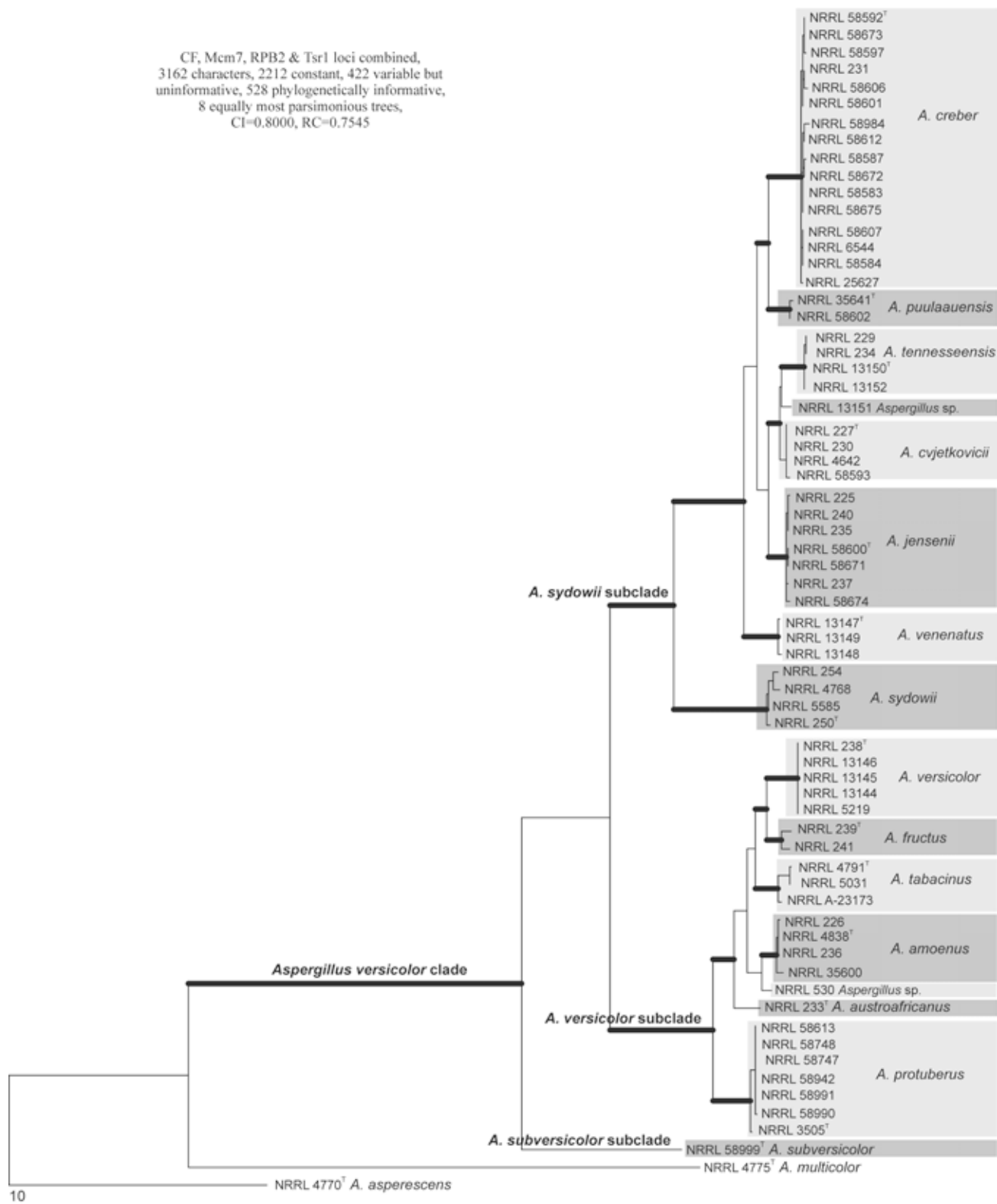


Fig. 1. Phylogenetic tree calculated from DNA sequence data from four concatenated loci. The section *Versicolores* contains three subclades, the *A. versicolor* subclade, the *A. sydowii* subclade and the *A. subversicolor* subclade. Thick branches indicate >90 % bootstrap and >0.90 Bayesian posterior probability for the node. Isolate NRRL 13151 is similar in colony appearance to *A. tennesseensis* but may represent a distinct species. Isolate NRRL 530 is similar in colony appearance to *A. amoenus* but also may represent a distinct species.

lineages contained a single isolate. Two of these single-isolate lineages, *A. subversicolor* and *A. austroafricanus*, were sufficiently distinct phenotypically from other species in the section and are described as new. The other two single-isolate lineages (NRRL 13151 and NRRL 530) were

phenotypically difficult to distinguish from their siblings, and species descriptions were not accorded them.

The section *Versicolores* clade contained three subclades (Fig. 1): the *A. sydowii* subclade containing *A. sydowii*, *A. creber*, *A. venenatus*, *A. tennesseensis*, *A.*

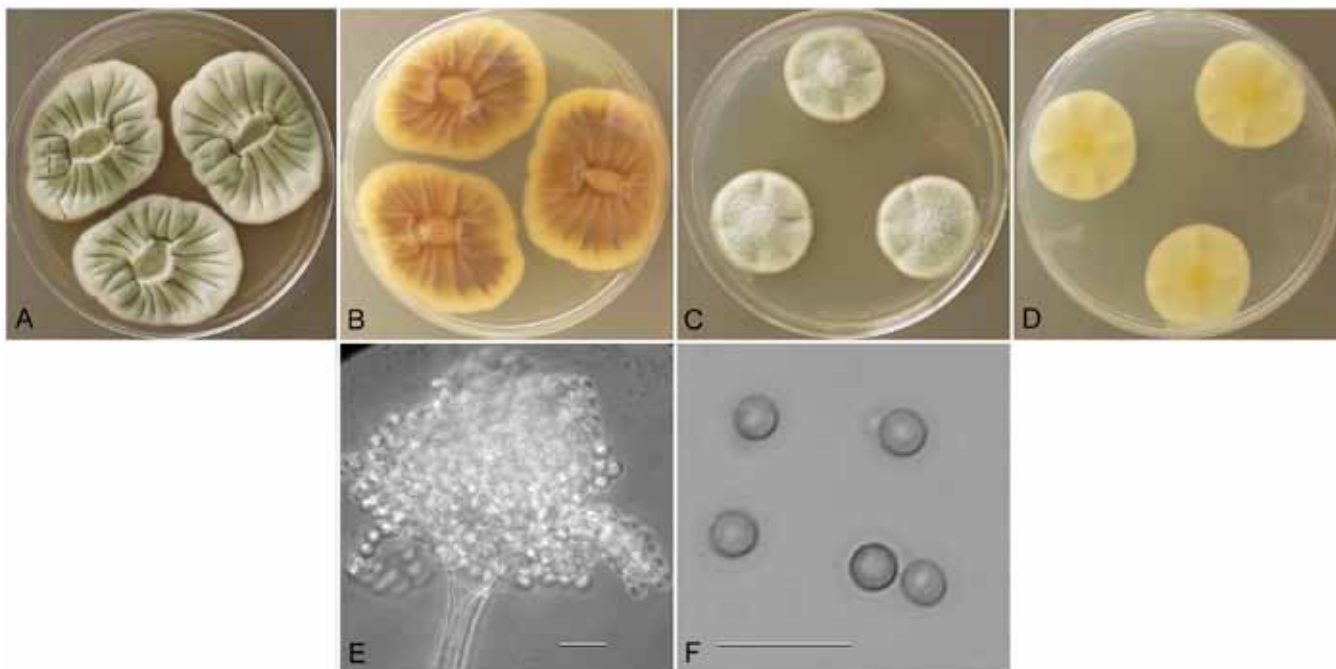


Fig. 2. *Aspergillus amoenus* (NRRL 4838), culture plates are 9 cm diam, colonies grown at 25 °C for 10 d. a. CYA colonies. b. CYA colony reverse. c. MEA colonies. d. MEA colony reverse. e. Smooth stipe, subglobose vesicle, and conidia, bar=10 µm. f. Globose, smooth-walled conidia, bar=10 µm.

cvjetkovicii, *A. jensenii* and *A. puulaauensis*; the *A. versicolor* subclade containing *A. versicolor*, *A. tabacinus*, *A. fructus*, *A. protuberus*, *A. amoenus* and *A. austroafricanus*; and the *A. subversicolor* subclade containing the single species *A. subversicolor*. Single-locus trees placed *A. sydowii* in the *A. sydowii* subclade, in the *A. versicolor* subclade or in a distinct clade containing only *A. sydowii* (Figs S1–S5, Supplementary Information, online only) with low confidence levels. The *Mcm7* locus from *A. sydowii* was not amplified despite numerous attempts and thus *A. sydowii* does not appear in Fig. S3 (Supplementary Information, online only). The combined data tree (Fig. 1) depicts *A. sydowii* as a member of the *A. sydowii* subclade with strong statistical support. In the combined data tree, each species' group of isolates resides on a branch with >90 % bootstrap proportion and >0.90 Bayesian posterior probability.

TAXONOMY

Previously described species

Aspergillus amoenus M. Roberg, *Hedwigia* **70**:138 (1931).

Mycobank MB250654
(Fig. 2a–f)

Type: Germany: Munster, isol. ex *Berberis* sp. fruit, 1930. *M. Roberg* (NRRL 4838—ex holotype culture).

Description: Colonies grown 10 d on CYA at 25 °C (Fig. 2a–b) attained 25–40 mm diam, radially sulcate, centrally raised or sunken 3–4 mm, one older isolate (NRRL 226) plane, sporulating moderately to well, conidial heads in grayish green

shades near tea green (R47), clear to pale orange exudate present in some isolates, faint reddish soluble pigment present in some isolates, reverse mostly reddish brown hues, with some isolates uncolored. Colonies grown 10 d on MEA at 25 °C (Fig. 2c–d) attained 23–33 mm diam, low, velutinous, some isolates with shallow sulcations, colony center often with funicular hyphal aggregates, sporulation in blue-green to gray-green shades, no soluble pigment except NRRL 226 with pale brown pigment, no exudate, reverse colored light orange yellow to pale yellow red. Incubation for 7 d on CYA at 5 °C produced no growth or germination of conidia. Incubation for 7 d on CYA at 37 °C commonly produced growth up to 6 mm diam.

Stipes (Fig. 2e) smooth walled, hyaline to yellow with brownish shades, (35–)100–600(–1100) × (2.5–)4–7(–8) µm, *vesicles* pyriform to spatulate, (4–)7–17(–21) µm diam, *conidial heads* biserial, *metulae* covering 1/3 to entire vesicle, 3–6(–8) × 2.5–4.0(–5.5) µm, *phialides* (5–)6–8(–11) × 2–3 µm, fragmentary heads resembling penicillate fructifications abundant, *conidia* (Fig. 2f) spherical to subspherical, occasionally ellipsoidal, 2.5–3.5(–5) µm, smooth walled, NRRL 35600 produced globose hülle cells 12–22 µm diam when grown on M40Y medium, other isolates did not.

Aspergillus protuberus Muntañola-Cvetkovi , *Mikrobiologija* **5**: 119 (1968).

Mycobank MB326650
(Fig. 3a–h)

Synonym: *Aspergillus versicolor* var. *protuberus* (Muntañola-Cvetkovi) Kozak., *Mycol. Pap.* **161**: 139 (1989).

Type: Yugoslavia: isol. ex rubber coated electrical cables, ca 1968 (NRRL 3505—ex holotype culture).

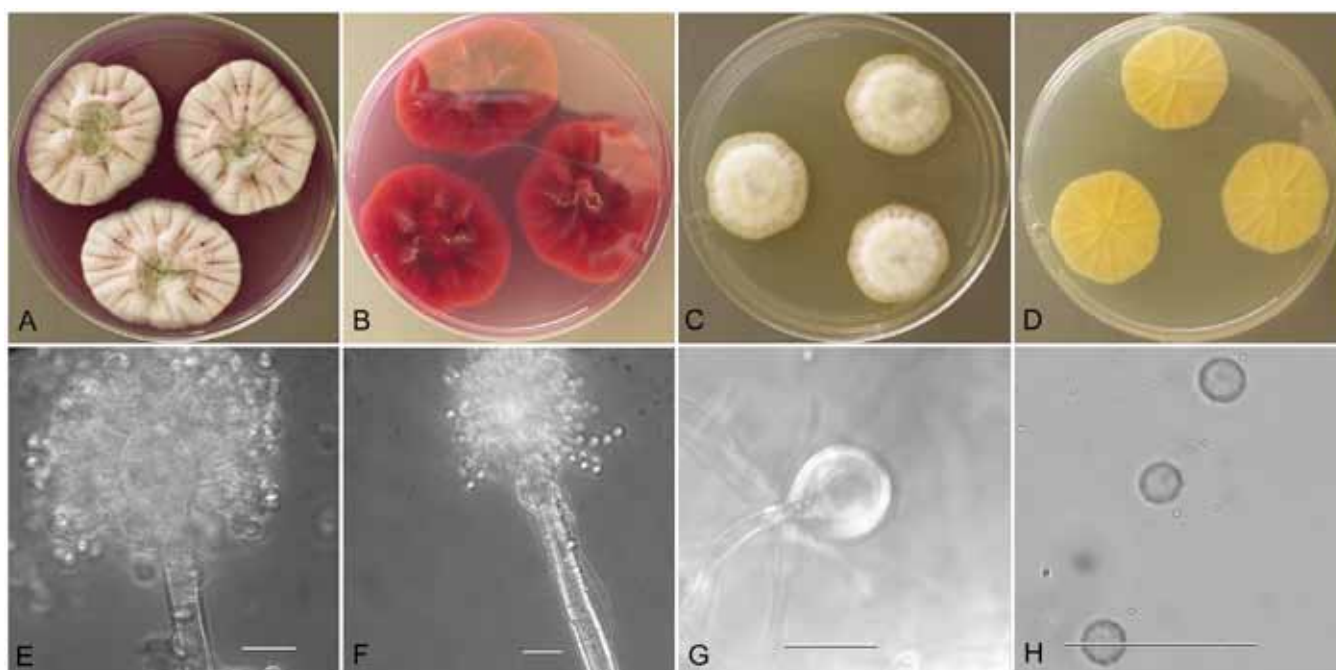


Fig. 3. *Aspergillus protuberus* (NRRL 3505), culture plates are 9 cm diam, colonies grown at 25 °C for 10 d. a. CYA colonies. b. CYA colony reverse. c. MEA colonies. d. MEA colony reverse. e. Stipe, subglobose to clavate vesicle, and conidia, bar=10 µm. f. Roughened surface of stipe, bar=10 µm. g. Globose hülle cell, bar=10 µm. h. Globose, finely roughened conidia, bar=10 µm.

Description: Colonies grown 10 d on CYA at 25 °C (Fig. 3a–b) attained 28–34 mm diam, radially and concentrically sulcate, wrinkled, centrally raised 2–4 mm, clumped aerial hyphae give a mealy appearance in some areas of some isolates, sporulation moderate with conidial heads often creamy white but sometimes patches of yellow-green conidia (celandine green R47) are present, scarlet red (R1) exudate moderately abundant, vinaceous-fawn (R40) to pale yellow soluble pigment present, reverse brownish red or orange cinnamon (R20), one isolate brazil red (R1). Colonies grown 10 d on MEA at 25 °C (Fig. 3c–d) attained 27–32 mm diam, foccose, mounded 4–5 mm centrally, radially sulcate, no exudate, no soluble pigment, reverse light pinkish yellow to pinkish yellow. Incubation for 7 d on CYA at 5 °C or 37 °C produced no growth or germination of conidia.

Stipes (Fig. 3e–f) smooth to tuberoso, hyaline to yellow or occasionally with brownish shades, (120–)300–800(–1250) × 4–10 µm, occasionally terminating with two vesicles, vesicles pyriform to spatulate, rarely subspherical, (6–)10–24(–27) µm diam, conidial heads biseriate, metulae covering half to entire vesicle, (3–)4–7(–8) × 2.5–4.5(–5.5) µm, phialides (4–)5–8(–11) × 2–3(–3.5) µm, fragmentary heads resembling penicillate fructifications occasionally present, conidia (Fig. 3h) spherical to subspherical or occasionally ellipsoidal to pyriform, (2.0–)2.5–3.5(–5) µm, finely roughened wall, hülle cells (Fig. 3g) globose sometimes present.

Aspergillus sydowii (Bain. & Sart.) Thom & Church *Aspergilli*:147 (1926).

MycoBank MB279636

(Fig. 4a–g)

Basionym: *Sterigmatocystis sydowi* Bainer & Sartory, *Ann. Mycol.* **11**: 25 (1913).

Type: *Sine loc.*: sent to C. Thom, prior to 1930, M. Swift (NRRL 250—culture ex neotype).

Description: Colonies grown 10 d on CYA at 25 °C (Fig. 4a–b) attained 27–37 mm diam, velutinous, radially sulcate, sporulating well, conidial heads deep bluish gray-green (R42), exudate moderate to abundant, clear to yellowish to reddish brown, reddish-brown soluble pigment, reverse tawny olive (R39) to orange cinnamon (R29) on the periphery. Colonies grown 10 d on MEA at 25 °C (Fig. 4c–d) attained 37–48 mm diam, velutinous, some isolates with shallow sulcations, sporulating in dark grayish blue-green color, funicular hyphal aggregates often seen centrally, no exudate, no soluble pigment, reverse unpigmented to brownish pink in NRRL 4768. Incubation for 7 d on CYA at 5 °C produced no growth or germination of conidia. Incubation at 37 °C produced colonies 10–17 mm diam in 10 d.

Stipes (Fig. 4e) smooth, colorless, 100–500 µm × 4–7 µm, vesicles subglobose, 5–10 (–15) µm diam, conidial heads biseriate, metulae covering most of the vesicle, 6–7 × 2–3 µm, phialides 7–10 × 2.0–2.5 µm, fragmentary heads (Fig. 4f) resembling penicillate fructifications abundant, conidia (Fig. 4g) globose to subglobose, 2.5–3.0 (–5) µm, spinulose.

Aspergillus tabacinus Nakaz *et al.*, *J. Agr. Chem. Soc. Japan* **10**: 177 (1934).

MycoBank MB539544

(Fig. 5a–f)

Synonym: *Aspergillus versicolor* var. *magnus* Sasaki, *J. Fac. Agric. Hokkaido Univ.* **49**: 144 (1950).

Type: *Sine loc.*: isol. ex tobacco, 1934, Y. Nakazawa (NRRL 4791—culture ex neotype).

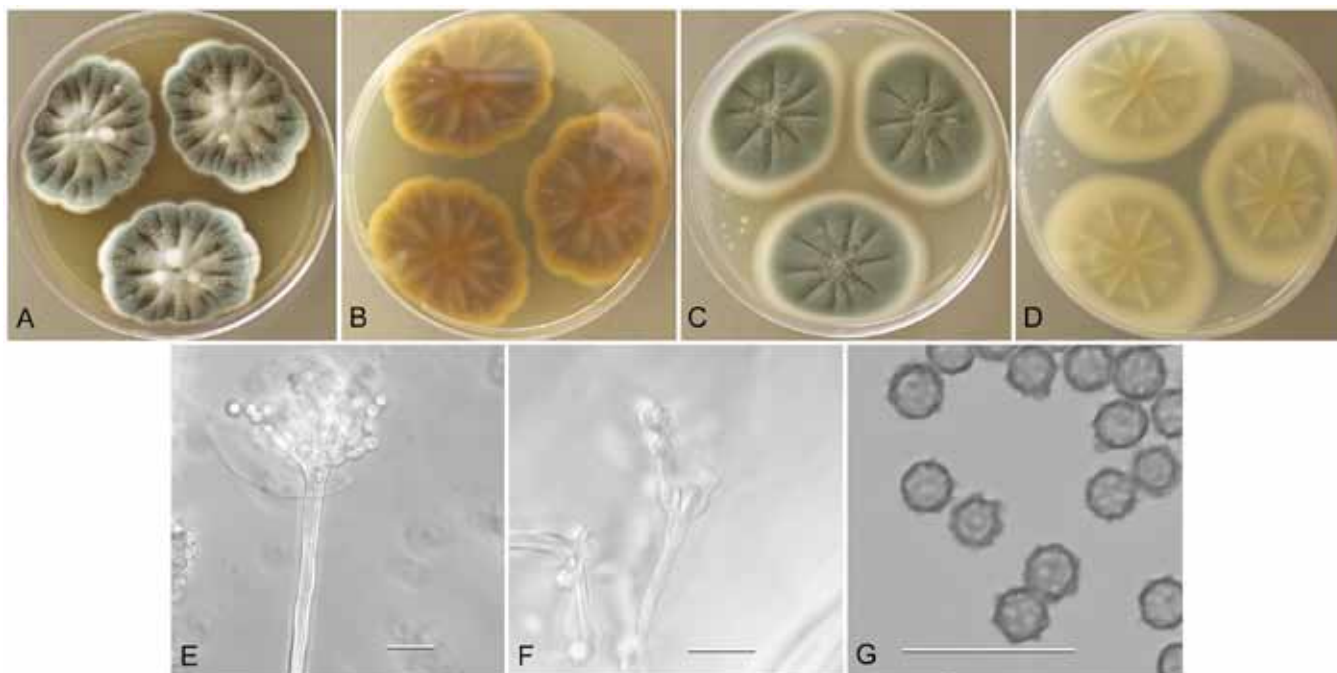


Fig. 4. *Aspergillus sydowi* (NRRL 250), culture plates are 9 cm diam, colonies grown at 25 °C for 10 d. a. CYA colonies. b. CYA colony reverse. c. MEA colonies. d. MEA colony reverse. e. Smooth stipe, subglobose vesicle, and conidia, bar=10 µm. f. Penicillate conidiophore from aerial hyphae, bar=10 µm. g. Subglobose, spinulose conidia, bar=10 µm.

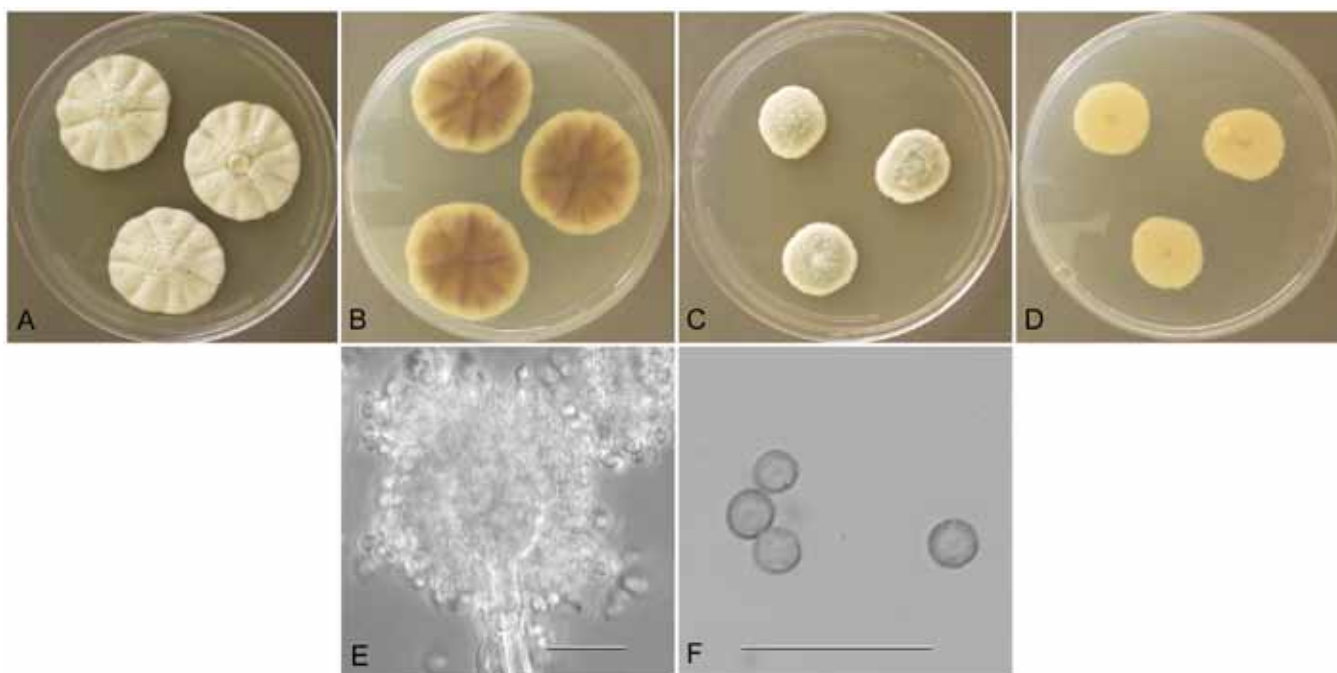


Fig. 5. *Aspergillus tabacinus* (NRRL 4791), culture plates are 9 cm diam, colonies grown at 25 °C for 10 d. a. CYA colonies. b. CYA colony reverse. c. MEA colonies. d. MEA colony reverse. e. Smooth stipe, with clavate vesicle, and conidia, bar=10 µm. f. Globose, smooth-walled conidia, bar=10 µm.

Description: Colonies grown 10 d on CYA at 25 °C (Fig. 5a–b) attained 30–32 mm diam, sulcate, centrally raised 2–3 mm, often sporulating heavily throughout but sometimes sporulation is delayed, conidial heads artemisia green (R47), sporulation from aerial branches pronounced, exudate clear when present, no soluble pigment, reverse uncolored in NRRL 5031, or brown in other isolates. Colonies grown 10

d on MEA at 25 °C (Fig. 5c–d) attained 17–30 mm diam, NRRL 4791 is velutinous and covered with funicular hyphal aggregates, NRRL 5031 and NRRL 62481 are foccose, sporulation in bluish-green shades, no exudate, no soluble pigment, reverse uncolored to cream or very pale yellow. Incubation for 7 d on CYA at 5 °C or 37 °C produced no growth or germination of conidia.

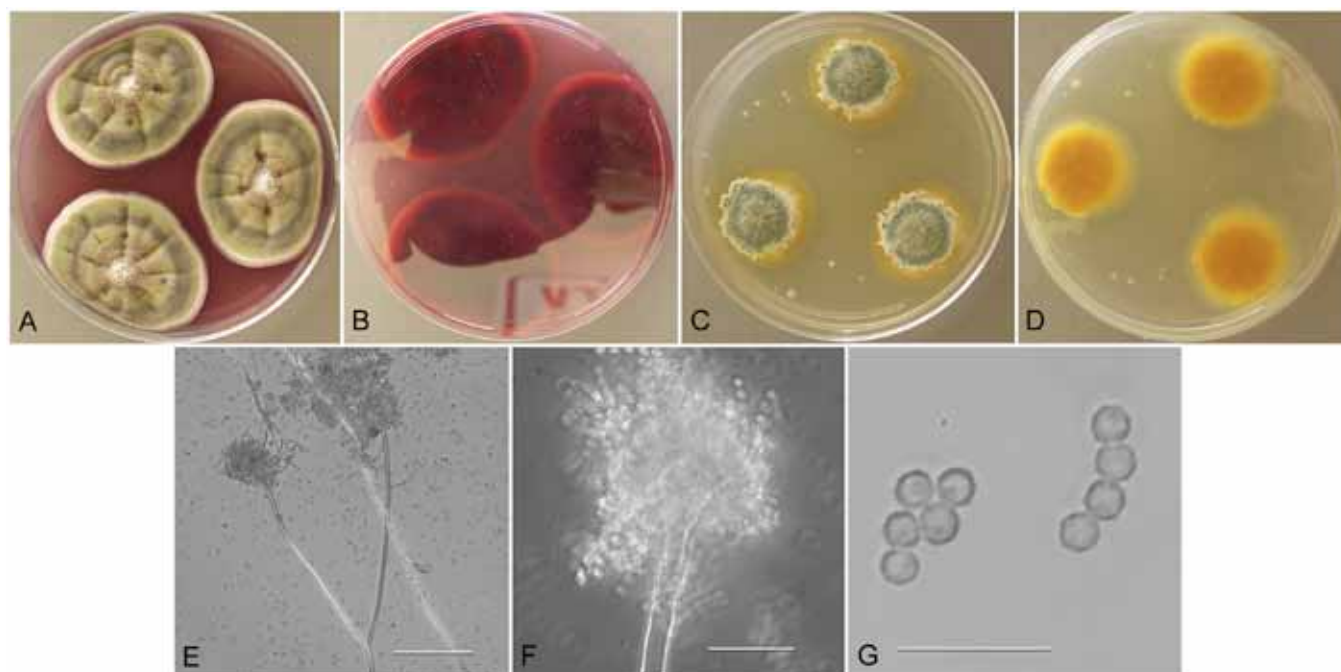


Fig. 6. *Aspergillus versicolor* (NRRL 238), culture plates are 9 cm diam, colonies grown at 25 °C for 10 d. a. CYA colonies. b. CYA colony reverse. c. MEA colonies. d. MEA colony reverse. e. Bifurcating stipe producing two conidiophores, bar=50 µm. f. Smooth stipe, subglobose vesicle, and conidia, bar=10 µm. g. Globose conidia with roughened walls, bar=10 µm.

Stipes smooth walled (Fig. 5e), septate, hyaline to yellow with brownish tint, (70–)300–700(–900) × 4–8(–9) µm, *vesicles* pyriform to spatulate, (5–)8–15(–22) µm diam, *conidial heads* biseriate, *metulae* covering half to entire vesicle, 3–8(–9) µm × 2.5–4.5(–5.5) µm, *phialides* 5–8(–11) × 2–3(–3.5) µm, fragmentary heads resembling penicillate fructifications abundant, *conidia* (Fig. 5f) spherical to subspherical, occasionally ellipsoidal, (2.5–)3–4(–7) µm, smooth walled.

Aspergillus versicolor (Vuill.) Tirab., *Annali Bot.* **7**: 9 (1908).

MycoBank MB172159

(Fig. 6a–g)

Basionym: *Sterigmatocystis versicolor* Vuill., in Mirsky, *Thèse de médecine* (Nancy) **27**:15 (1903).

Type: *Sine loc.*: 1935, V. K. Charles (NRRL 238—culture ex neotype).

Description: Colonies grown 10 d on CYA at 25 °C (Fig. 6a–b) attained 28–36 mm diam, sulcate, centrally raised 4–5 mm, sporulating well, conidial heads pale grayish green near tea green (R47), central area mealy from aggregated aerial hyphae, exudate present in mostly clear to pale pink shades (brownish red in one isolate), faint to very obvious pinkish soluble pigment, reverse vinaceous or brown or scarlet (NRRL 238). Colonies grown 10 d on MEA at 25 °C (Fig. 6c–d) attained 21–31 mm diam, low, with funicular hyphal aggregates, sometimes dominating colony appearance, sporulating in pale to dark bluish green to gray green color, no exudate seen, soluble pigment yellow in some isolates, not present in others, reverse pale yellow, yellow orange

or orange. Incubation for 7 d on CYA at 5 °C produced no growth or germination of conidia. Incubation for 7 d on CYA at 37 °C produced growth up to 8 mm diam.

Stipes (Fig. 6e–f) smooth, occasionally lightly tuberoso, hyaline to yellow with brownish shades, (45–)200–750(–1050) × (4–)5–8(–12) µm, *vesicles* pyriform to spatulate, (6–)9–17(–20) µm in diam, *conidial heads* biseriate, *metulae* covering half to entire vesicle, 3–6(–9) × 2.5–4.5 µm, *phialides* (4–)5–7(–11) × 2–3 µm, fragmentary heads resembling penicillate fructifications occasionally present, *conidia* (Fig. 6g) spherical to subspherical, occasionally ellipsoidal, (2–)2.5–3.5(–6.5) µm, finely roughened wall, *hülle cells* globose, produced by NRRL 5219 when grown on M40Y medium, but not other isolates.

Observations: The ex-neotype culture NRRL 238 (isolated in 1935) is quite different in appearance, particularly in production of dark red soluble pigment and scarlet colony reverse on CYA, from the more recent isolates that were placed in the ARS Culture Collection between 1970 and 1984. The more recent isolates (NRRL 5219, NRRL 13144, NRRL 13145 and NRRL 13146) are quite similar in appearance and are the primary basis of the phenotypic description. Although there is phenotypic distinction, all five isolates are *A. versicolor* based on DNA sequence analysis.

New species

Aspergillus austroafricanus Jurjevic, S. W. Peterson & B. W. Horn, **sp. nov.**

MycoBank MB800597

(Fig. 7a–f)

Etymology: Isolated from soil in South Africa.

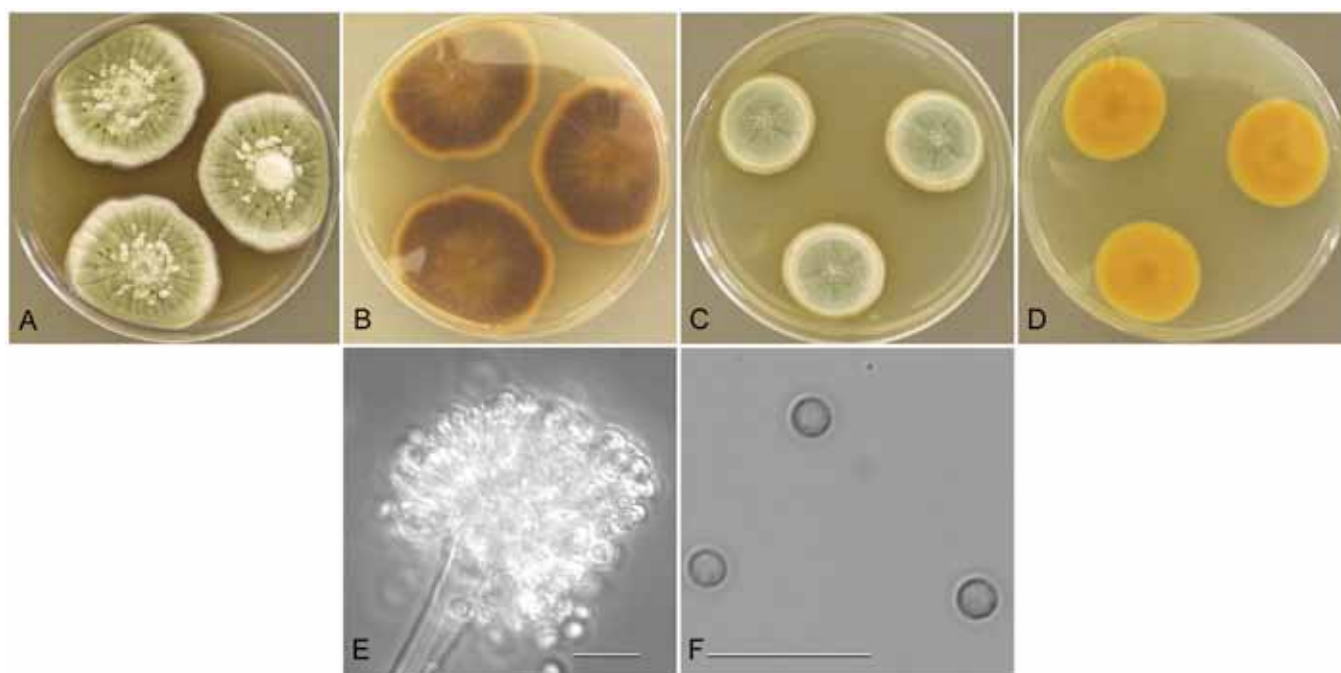


Fig. 7. *Aspergillus austroafricanus* (NRRL 233), culture plates are 9 cm diam, colonies grown at 25 °C for 10 d. a. CYA colonies. b. CYA colony reverse. c. MEA colonies. d. MEA colony reverse. e. Smooth stipe, subglobose vesicle and conidia, bar=10 µm. f. Globose, smooth-walled conidia, bar=10 µm.

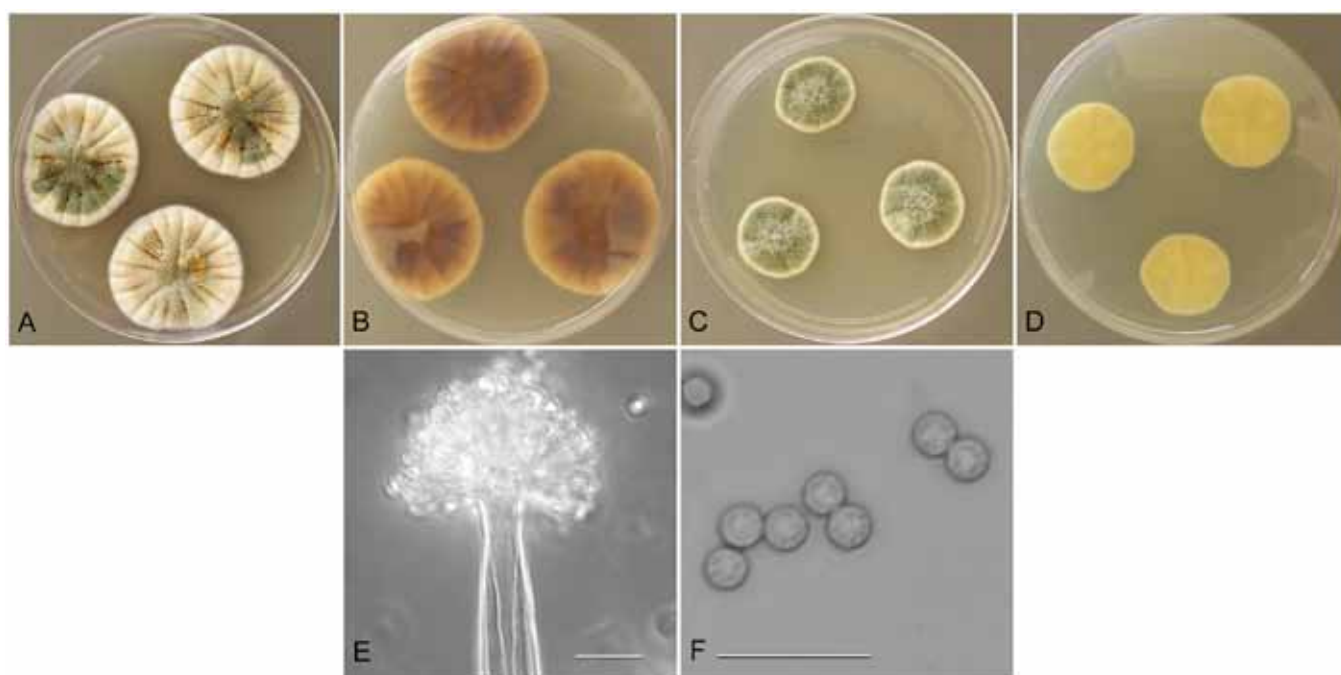


Fig. 8. *Aspergillus creber* (NRRL 58583), culture plates are 9 cm diam, colonies grown at 25 °C for 10 d. a. CYA colonies. b. CYA colony reverse. c. MEA colonies. d. MEA colony reverse. e. Smooth stipe, subglobose vesicle, and conidia, bar=10 µm. f. Globose, finely roughened conidia, bar=10 µm.

Type: **South Africa:** Capetown, sent to C. Thom, 1922, V. A. Putterill (BPI 880914 – holotype [from dried colonies of NRRL 233 grown 7 d at 25 °C on CYA and MEA]).

Diagnosis: Conidia smooth-walled, no growth at 37 °C, produces reddish brown soluble pigment when grown on CYA.

Description: Colonies grown 10 d on CYA at 25 °C (Fig. 7a–b) attained 23–24 mm diam, mounded, shallowly sulcate,

overgrowth by clumped hyphae making surface appear mealy, sporulating well, conidial heads near sage green (R47), sparse clear exudate, soluble pigment reddish brown, reverse dull brown. Colonies grown 10 d on MEA at 25 °C (Fig. 7c–d) attained 27 mm diam, velutinous, sporulation pale blue green, central hyphal tufts, no exudate, no soluble pigment, reverse yellowish orange. Incubation for 7 d on CYA at 5 °C or 37 °C produced no growth or germination of conidia.

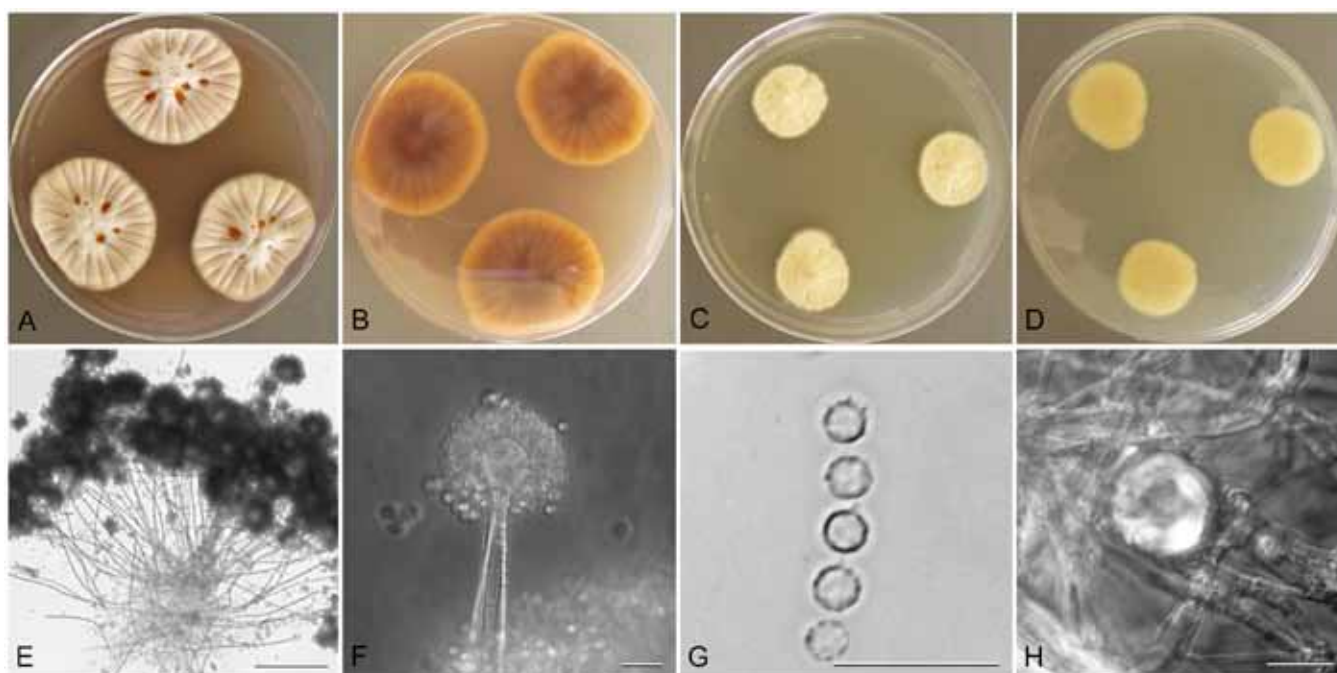


Fig. 9. *Aspergillus cvjetkovicii* (NRRL 4642), culture plates are 9 cm diam, colonies grown at 25 °C for 10 d. a. CYA colonies. b. CYA colony reverse. c. MEA colonies. d. MEA colony reverse. e. Numerous conidiophores arising from the basal colony, bar=50 µm. f. Stipe, subglobose vesicle, and conidia, bar=10 µm. g. Globose, spinulose conidia, bar=10 µm. h. Globose hülle cell, bar=10 µm.

Stipes (Fig. 7e) smooth walled, hyaline to yellowish, (40–)100–350(–500) µm × 3–5(–6) µm, *vesicles* pyriform to spatulate, (4–)6–12(–15) µm diam, *conidial heads* biserial, *metulae* covering 1/3 to entire vesicle, 3–7(–9) µm × 2.5–4.5 µm, *phialides* (4–)5–7(–9) × (2–)2.5–3(–4) µm, fragmentary heads resembling penicillate fructifications occasionally present, *conidia* (Fig. 7f) spherical to subspherical, 2.5–3.5 (–4.5) µm, smooth walled.

Aspergillus creber Jurjevic, S. W. Peterson & B. W. Horn, **sp. nov.**

MycoBank MB800598

(Fig. 8a–f)

Etymology: From the Latin word *creber* meaning numerous or frequent.

Type: **USA:** *California:* isol. ex air sample, Nov. 2008, Z. Jurjevic (BPI 800912 – holotype; [from dried colonies of NRRL 58592 grown 7 d at 25 °C on CYA and MEA]).

Diagnosis: Produces rough-walled conidia, no growth at 37 °C, no soluble pigments formed on CYA or MEA, conidial color pea green or sage green on CYA and MEA.

Description: Colonies grown 10 d on CYA at 25 °C (Fig. 8a–b) attained 18–26 mm diam, radially sulcate, raised 3–5 mm centrally, peripheral areas white or yellow, central area sporulating well, conidial heads pea green to artemisia green (R47), exudate when present yellowish to reddish, no soluble pigment, reverse clay colored to cinnamon or reddish brown (R29). Colonies grown 10 d on MEA at 25 °C (Fig. 8c–d) attained 18–22 mm diam, low to 1–2 mm mounded, often overgrown centrally with hyphae aggregated into funicles, sporulation in yellow-green shades (pea green to sage green

R47), with ca 1 mm white border, one isolate (NRRL 231) with vivid brown soluble pigment, other isolates no soluble pigment, no exudate, reverse pale yellow orange or olive drab or orange brown. Incubation for 7 d on CYA at 5 °C or 37 °C produced no growth or germination of conidia.

Stipes (Fig. 8e) smooth walled, (10–)70–450(–650) × (3–)4–7(–8) µm, *vesicles* pyriform to spatulate and occasionally subglobose, (4–)7–17(–25) µm diam, *conidial heads* biserial, *metulae* (3–)4–6(–8) × 2.5–4.5(–5) µm, *phialides* (4–)5–8(–10) × 2–3(–4) µm, *conidia* (Fig. 8f) spherical to subspherical, occasionally ellipsoidal to pyriform, (2.5–)3–4(–9) µm, finely roughened wall.

Aspergillus cvjetkovicii Jurjevic, S. W. Peterson & B. W. Horn, **sp. nov.**

MycoBank MB800599

(Fig. 9a–h)

Etymology: Named in honor of Bogdan Cvjetkovi (University of Zagreb); pronunciation `chet-kO-`vi-chi\.

Type: **USA:** *New Jersey:* isol. ex soil, 1915, W. Wilson (BPI 880909 – holotype [from dried colonies of NRRL 227 grown 7 d at 25 °C on CYA and MEA]).

Diagnosis: Produces spinulose conidia, no growth at 37 °C, colonies producing red exudate and red soluble pigment on CYA.

Description: Colonies grown 10 d on CYA at 25 °C (Fig. 9a–b) attained 24–29 mm diam, radially sulcate, either centrally sunken or raised (2–3 mm), sporulating well, conidial heads white to cream in most isolates, pea green (R47) in NRRL 58593, exudate generally abundant, reddish brown to orange cinnamon, reddish brown soluble pigment, reverse yellowish

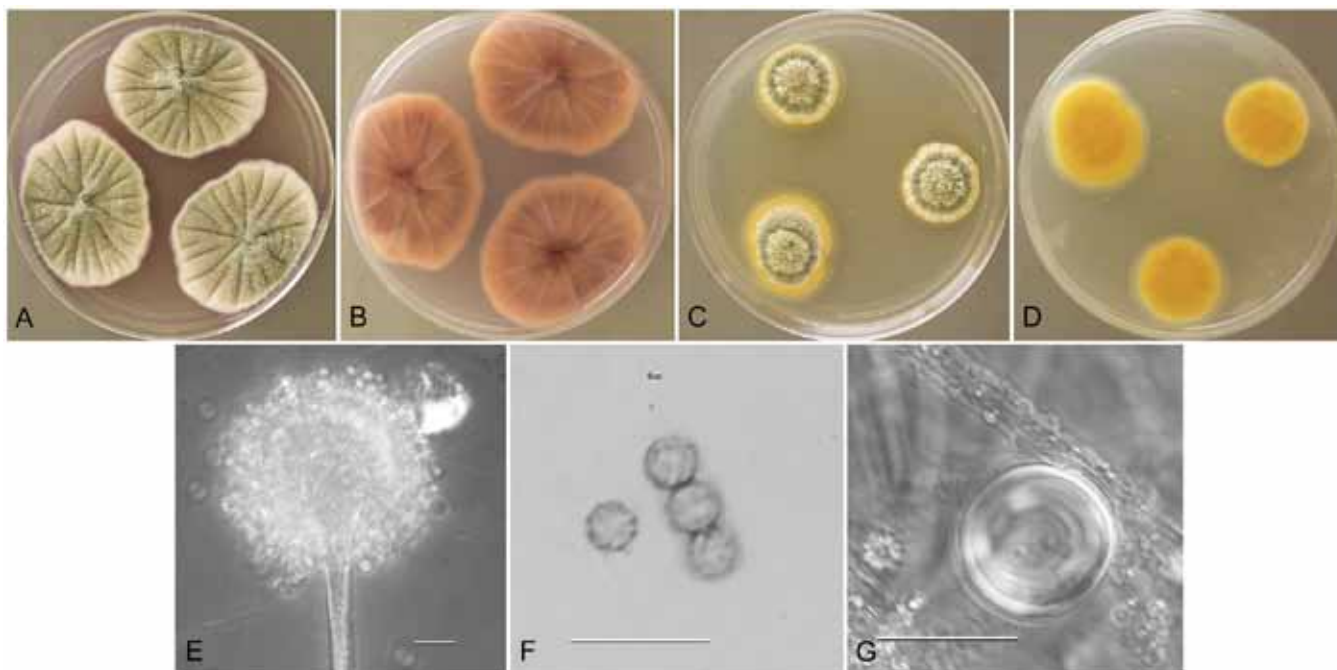


Fig. 10. *Aspergillus fructus* (NRRL 239), culture plates are 9 cm diam, colonies grown at 25 °C for 10 d. a. CYA colonies. b. CYA colony reverse. c. MEA colonies. d. MEA colony reverse. e. Smooth stipe, spatulate vesicle, and conidia, bar=10 µm. f. Globose, finely roughened conidia, bar=10 µm. g. Globose hülle cell, bar=10 µm.

red shades near orange cinnamon (R29) or tawny olive (R39). Colonies grown 10 d on MEA at 25 °C (Fig. 9c–d) attained 17–36 mm diam, low, slightly sulcate, sporulating throughout in creamy yellow shades, NRRL 58593 conidia are yellowish green, NRRL 227 and NRRL 230 produce brown soluble pigment while NRRL 4642 and 58593 do not produce soluble pigment, reverse brownish orange or pale creamy yellow. Incubation for 7 d on CYA at 5 °C or 37 °C produced no growth or germination of conidia.

Stipes (Fig. 9e–f) smooth walled, hyaline to yellow, (40–)200–700(–850) × (3–)4–7(–8) µm, *vesicles* pyriform to spatulate, rarely subspherical, (5–)9–18(–23) µm diam, *conidial heads* biserial, *metulae* covering half to entire vesicle, 3–6(–8) × 2.5–4.5 µm, *phialides* 5–8(–10) × 2–3(–4) µm, occasionally solitary phialides present up to 32 µm long, fragmentary heads resembling penicillate fructifications occasionally present, *conidia* (Fig. 9g) spherical to subspherical, occasionally ellipsoidal, (2–)2.5–3.5(–5) µm, spinulose, *hülle cells* (Fig. 9h) globose, sometimes present.

Aspergillus fructus Jurjevic, S. W. Peterson & B. W. Horn, **sp. nov.**

MycoBank MB800600

(Fig. 10a–g)

Etymology: From fruit.

Type: **USA:** *California:* isol. ex date fruit, 1939, Bliss (BPI 880915 – holotype [from dried colonies of NRRL 239 grown 7 d at 25 °C on CYA and MEA]).

Diagnosis: Resembling *A. versicolor* growth at 37 °C, but forming shorter conidiophores 150–400 µm versus 200–750 µm conidiophores in *A. versicolor*.

Description: Colonies grown 10 d on CYA at 25 °C (Fig. 10a–b) attained 29–39 mm diam, sulcate, centrally raised 4–5 mm, funicular clumps of aerial hyphae abundant, sporulating well, conidial heads celandine green (R47), exudate clear to yellow, moderately abundant, soluble pigment clear, orange red in NRRL 239, reverse uncolored or mahogany red to orange-rufous (R2). Colonies grown 10 d on MEA at 25 °C (Fig. 10c–d) attained 22–32 mm diam, slightly sulcate, centrally covered by hyphal tufts, sporulation in yellow-green hues near artemisia green (R47), no exudate, no soluble pigment, reverse uncolored or drab orange. NRRL 241 was foccose on MEA. Incubation for 7 d on CYA at 5 °C produced no growth or germination of conidia. Incubation for 7 d on CYA at 37 °C produced growth up to 4 mm diam.

Stipes (Fig. 10e) smooth walled, hyaline to yellow, (50–)150–400(–500) × 4–7 µm, *vesicles* pyriform to spatulate, (6–)9–17(–21) µm diam, *conidial heads* biserial, *metulae* covering half to entire vesicle, (2–)3–7(–9) × 2.5–4.5(–7) µm, *phialides* (5–)6–8(–11) × 2–3(–4) µm, fragmentary heads resembling penicillate fructifications abundant, *conidia* (Fig. 10f) spherical to subspherical, occasionally ellipsoidal, (2–)2.5–3.5(–4.5) µm, finely roughened wall, *hülle cells* (Fig. 10g) globose, sometimes present.

Aspergillus jensenii Jurjevic, S. W. Peterson & B. W. Horn, **sp. nov.**

MycoBank MB800601

(Fig. 11a–g)

Etymology: Named in honor of C. N. Jensen who first reported this species as *Aspergillus globosus* Jensen, a later homonym of *A. globosus* Link.

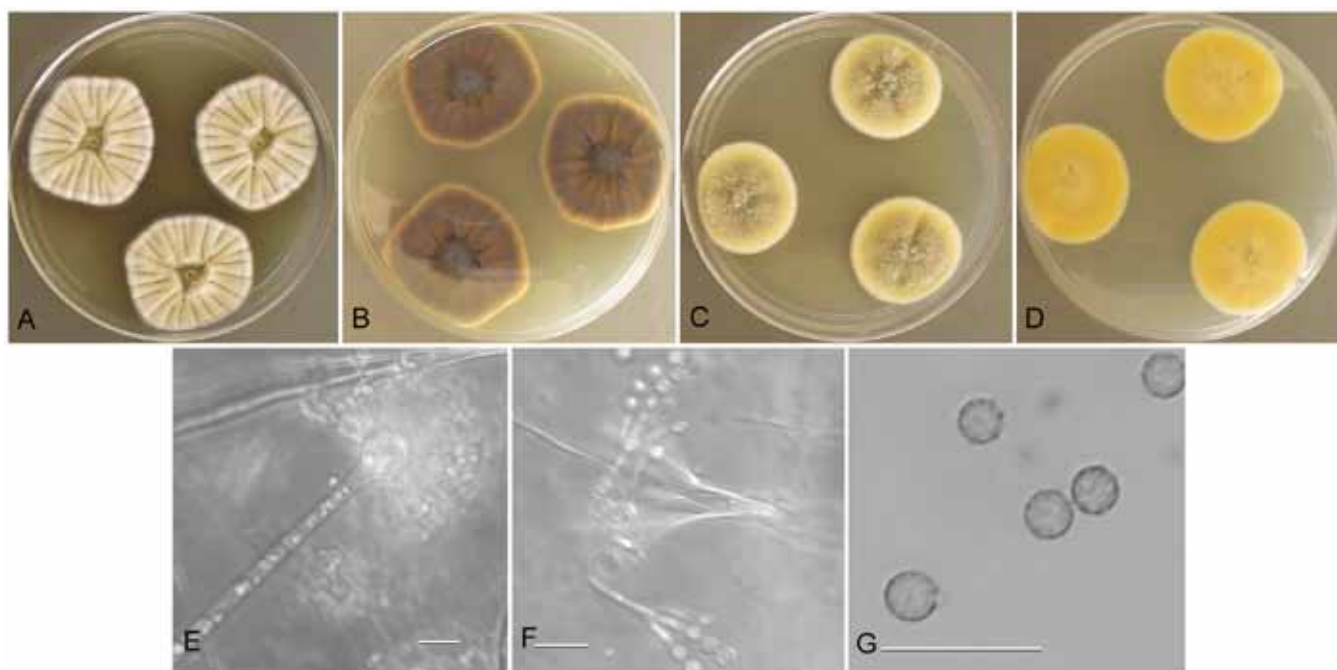


Fig. 11. *Aspergillus jensenii* (NRRL 58671), culture plates are 9 cm diam, colonies grown at 25 °C for 10 d. a. CYA colonies. b. CYA colony reverse. c. MEA colonies. d. MEA colony reverse. e. Smooth stipe, subglobose vesicle, metulae and phialides, bar=10 µm. f. Penicillate conidiogenous cells from aerial hyphae, bar=10 µm. g. Globose, finely roughened conidia, bar=10 µm.

Type: USA: Montana: isol. ex air sample, Oct. 2008, Z. Jurjevic (BPI 880910 – holotype [from dried colonies of NRRL 58600 grown 7 d at 25 °C on CYA and MEA]).

Synonym: *Aspergillus globosus* Jensen, Cornell University Agricultural Experiment Station Bulletin 315: 482 (1912); non Link 1809.

Diagnosis: Conidial walls roughened, no growth at 37 °C, conidial color near celandine, tawny olive to dark amber colony reverse on CYA.

Description: Colonies grown 10 d on CYA at 25 °C (Fig. 11a–b) attained 20–27 mm diam, radially sulcate, centrally raised or sunken, with clumped hyphal aggregates common in some isolates, sporulating moderately well, conidial heads celandine (R47) centrally and often white peripherally, exudate when present reddish brown or yellow brown, soluble pigment faint or intense yellow brown, in one case reddish brown, reverse tawny olive (R39) to dark brown near dark amber (R3). Colonies grown 10 d on MEA at 25 °C (Fig. 11c–d) attained 17–30 mm diam, low, plane, most isolates have funicular tufts of aerial hyphae centrally, sporulating well in yellowish blue-green shades, no exudate seen, soluble pigment either light brown or reddish brown, brownish orange in one isolate, reverse pale yellow or orange or brownish red. Incubation for 7 d on CYA at 5 °C or 37 °C produced no growth or germination of conidia.

Stipes (Fig. 11e) smooth walled, hyaline to yellow, occasionally with brownish shades, (45–)200–700(–1000) × (–3)4–7(–8) µm, vesicles pyriform to spatulate, rarely subspherical, (5–)7–16(–22) µm diam, conidial heads biserial, metulae covering 1/3 to entire vesicle, 3–8 × 2.5–4(–5) µm, phialides (4–)5–8(–11) × 2–3 µm, rarely solitary

phialides present up to 32 µm long and up to 4.5 µm diam, fragmentary heads resembling penicillate fructifications (Fig. 11f) commonly present, conidia (Fig. 11g) spherical to subspherical, occasionally ellipsoidal to pyriform, (2.5–)3–4.5(–7) µm, finely roughened wall, globose hülle cells 15–20 µm diam produced by NRRL 58582 but not other isolates.

Aspergillus puulauensis Jurjevic, S. W. Peterson & B. W. Horn, **sp. nov.**

MycoBank MB800602

(Fig. 12a–h)

Etymology. Isolated near the Pu'u la'au Highway on Hawaii; pronunciation ˈpU-U-la-U-en-sis\

Type: USA: Hawaii: isol. ex dead hardwood branch, 2003, D.T. Wicklow (BPI 880911 – holotype [from dried colonies of NRRL 35641 grown 7 d at 25 °C on CYA and MEA]).

Diagnosis: Isolates produce abundant hülle cells when grown on M40Y agar, no growth at 37 °C,.

Description: Colonies grown 10 d on CYA at 25 °C (Fig. 12a–b) attained 22–25 mm diam, sulcate, centrally raised 5–6 mm with funicular hyphal clumps, sporulation light, conidial heads artemisia green (R47), exudate when present clear or reddish, soluble pigment when present brown, reverse yellowish to clay color (R39) or cinnamon (R29). Colonies grown 10 d on MEA at 25 °C (Fig. 12c–d) attained 21–25 mm diam, sulcate or plane, low, velutinous, deep green (artemisia to lily green R47), no exudate seen, no soluble pigment, reverse pale yellow near chamois or pale orange. Incubation for 7 d on CYA at 5 °C and 37 °C produced no growth or germination of conidia.

Stipes (Fig. 12e) smooth walled, hyaline to yellow, (35–)100–500(–700) × (3–)4–7 µm, vesicles pyriform to spatulate,

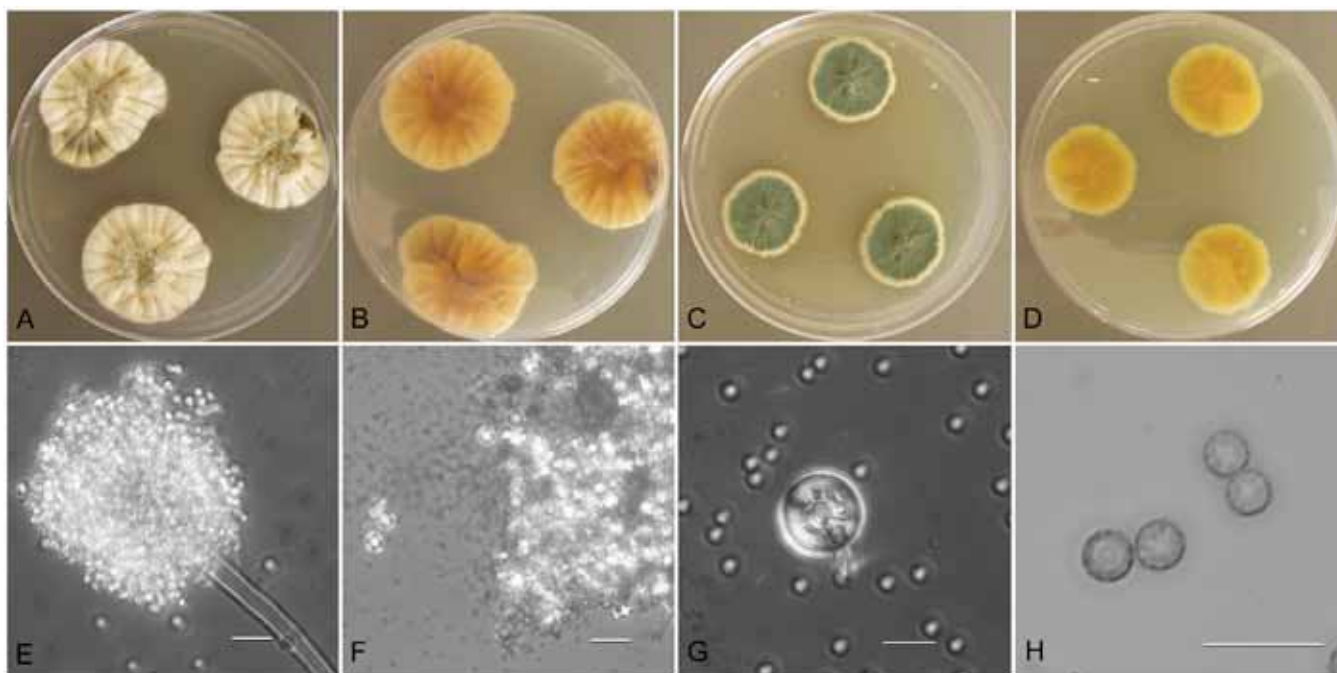


Fig. 12. *Aspergillus puulaauensis* (NRRL 35641), culture plates are 9 cm diam, colonies grown at 25 °C for 10 d. a. CYA colonies. b. CYA colony reverse. c. MEA colonies. d. MEA colony reverse. e. Smooth stipe, vesicle, and conidia, bar=10 µm. f. Mass of hülle cells, bar=50 µm. g. Hülle cell, bar=10 µm. h. Globose conidia with finely roughened walls, bar=10 µm.

occasionally subspherical, (5–)8–18(–21) µm diam, *conidial heads* biseriolate, *metulae* covering half to entire vesicle, (3–)4–7(–9) × 2.5–4 µm, *phialides* 5–7(–10) × 2–3 µm, fragmentary heads resembling penicillate fructifications occasionally present, *conidia* (Fig. 12h) spherical to ellipsoidal, (2.5–)3–4(–5.5) µm, finely roughened wall, *hülle cells* (Fig. 12f–g) spherical 11–19 µm diam seen in all isolates when grown on M40Y medium.

Aspergillus subversicolor Jurjevic, S. W. Peterson & B. W. Horn, *sp. nov.*

Mycobank MB800603

(Fig. 13a–f)

Etymology: Beneath or at the foot of *Aspergillus versicolor*.

Type: India: Karnataka: isol. ex green coffee berries, 1970, B. Muthappa (BPI 880918 – holotype [from dried colonies of NRRL 58999 grown 7 d at 25 °C on CYA and MEA]).

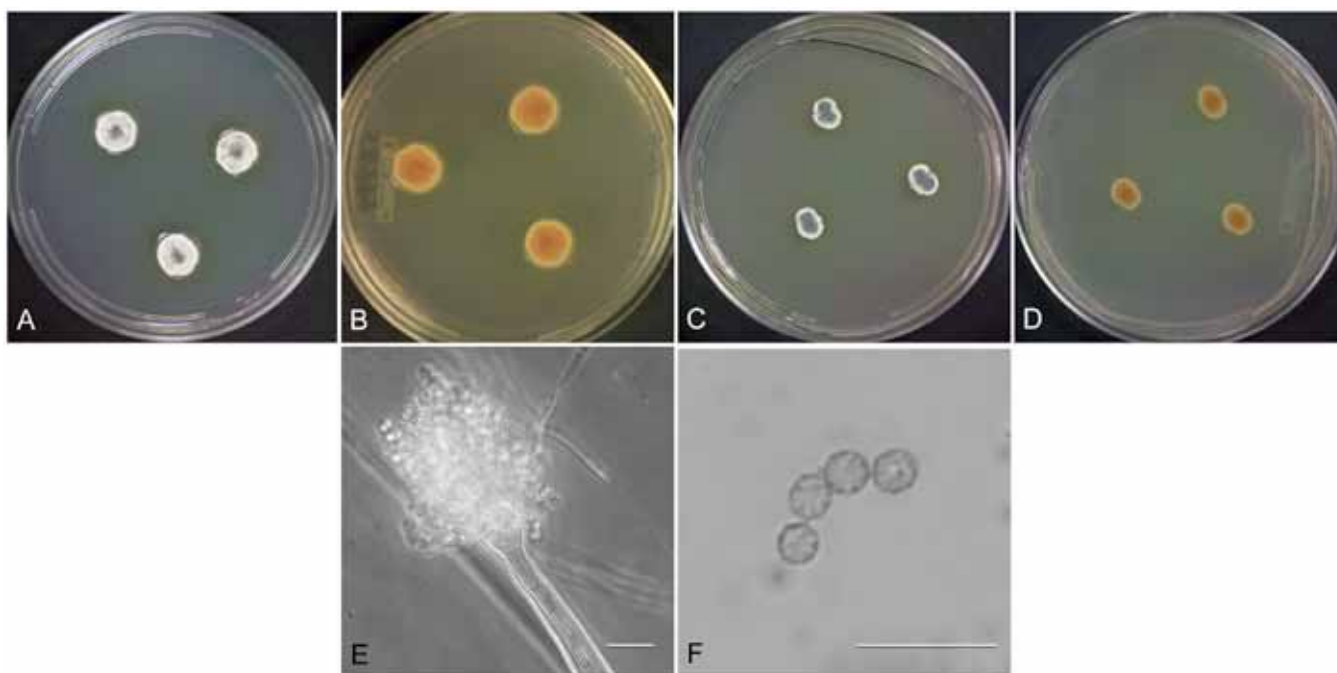


Fig. 13. *Aspergillus subversicolor* (NRRL 58999), culture plates are 9 cm diam, colonies grown at 25 °C for 10 d. a. CYA colonies. b. CYA colony reverse. c. MEA colonies. d. MEA colony reverse. e. Smooth stipe, subglobose vesicle, and conidia, bar=10 µm. f. Subglobose, finely roughened conidia, bar=10 µm.

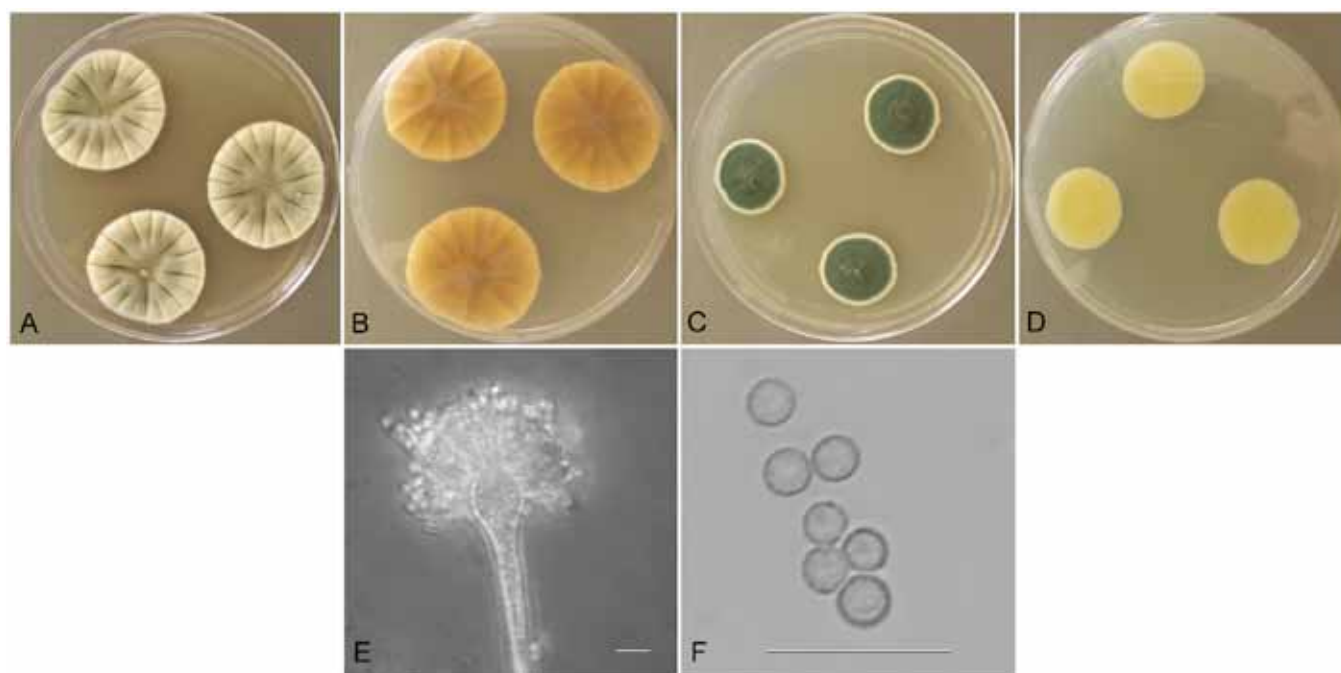


Fig. 14. *Aspergillus tennesseensis* (NRRL 13150), culture plates are 9 cm diam, colonies grown at 25 °C for 10 d. a. CYA colonies. b. CYA colony reverse. c. MEA colonies. d. MEA colony reverse. e. Smooth stipe, pyriform vesicle, and conidia, bar=10 µm. f. Globose, finely roughened conidia, bar=10 µm.

Diagnosis: Conidia rough-walled, no growth at 37 °C, growing slowly on all media, producing yellow soluble pigment on CYA but no exudate.

Description: Colonies grown 10 d on CYA at 25 °C (Fig. 13a–b) attained 18–20 mm diam, sulcate, raised 5–6 mm centrally, wrinkled, sporulating sparsely, conidial heads artemisia green (R47), no exudate, soluble pigment faint yellow, reverse tawny (R15) to ochraceous orange. Colonies grown 10 d on MEA at 25 °C (Fig. 13c–d) attained 12–14 mm diam, low, plane, velutinous, sporulating in bluish green color (artemisia R47), no exudate, no soluble pigment, reverse brownish orange. Incubation for 7 d on CYA at 5 °C or 37 °C produced no growth or germination of conidia.

Stipes (Fig. 13e) smooth walled, hyaline to slightly brownish, (60–) 250–450 (–550) × 4–7 (–10) µm, *vesicles* pyriform to subglobose (6–)10–17 (–22) µm diam, *conidial heads* biseriate, *metulae* covering half to entire or rarely 1/3 of vesicle, (3–)4–7 (–9) × (2–)2.5–4 µm, bearing 2–3 ampulliform *phialides*, 5–8 (–10) × 2–3 µm, fragmentary heads resembling penicillate fructifications occasionally present, *conidia* (Fig. 13f) spherical to subspherical, occasionally ellipsoidal to pyriform, (2.5–)3–4 (–7) µm, finely roughened wall.

Aspergillus tennesseensis Jurjevic, S. W. Peterson & B. W. Horn, **sp. nov.**
MycoBank MB800604
(Fig. 14a–f)

Etymology: Isolated in Tennessee.

Type: USA: Tennessee: isol. ex toxic dairy feed, 1984, B.W. Horn (BPI 880917 – holotype [from dried colonies of NRRL 13150 grown 7 d at 25 °C on CYA and MEA]).

Diagnosis: Producing rough-walled conidia, no growth at 37 °C, conidial color slate green when grown on MEA.

Description: Colonies grown 10 d on CYA at 25 °C (Fig. 14a–b) attained 22–30 mm diam, composed of a loose hyphal mat, radially sulcate, centrally raised or sunken, overgrown by clumps of aerial hyphae in some isolates, sporulating well centrally, pea green to artemisia green (R47), scant clear exudate usually present, soluble pigment absent, reverse in brownish orange shades near honey yellow or chamois (R30). Colonies grown 10 d on MEA at 25 °C (Fig. 14c–d) attained 20–46 mm diam, low, plane, velutinous, sporulating in dark green color near slate green (R47), no exudate, no soluble pigment, reverse uncolored, pale lemon yellow, or pale brown. Incubation for 7 d on CYA at 5 °C or 37 °C produced no growth or germination of conidia.

Stipes (Fig. 14e) smooth walled, hyaline to yellowish with brownish shades, (35–)100–300 (–400) × 4–7 µm, *vesicles* pyriform, (7–)10–16 (–18) µm diam, *conidial heads* biseriate, *metulae* covering half to entire vesicle, 4–6 (–8) × 2.5–4 µm, *phialides* 5–8 (–11) × 2–3 µm, fragmentary heads resembling penicillate fructifications occasionally present, *conidia* (Fig. 14f) spherical to subspherical, occasionally ellipsoidal to pyriform, (2.5–)3–4 (–8) µm, finely roughened wall.

Aspergillus venenatus Jurjevic, S. W. Peterson & B. W. Horn, **sp. nov.**
MycoBank MB800605
(Fig. 15a–h)

Etymology: Producing toxins.

Type: USA: Tennessee: isol. ex toxic dairy feed, 1984, B.W. Horn (BPI 880916 – holotype [from dried colonies of NRRL 13147 grown 7 d at 25 °C on CYA and MEA]).

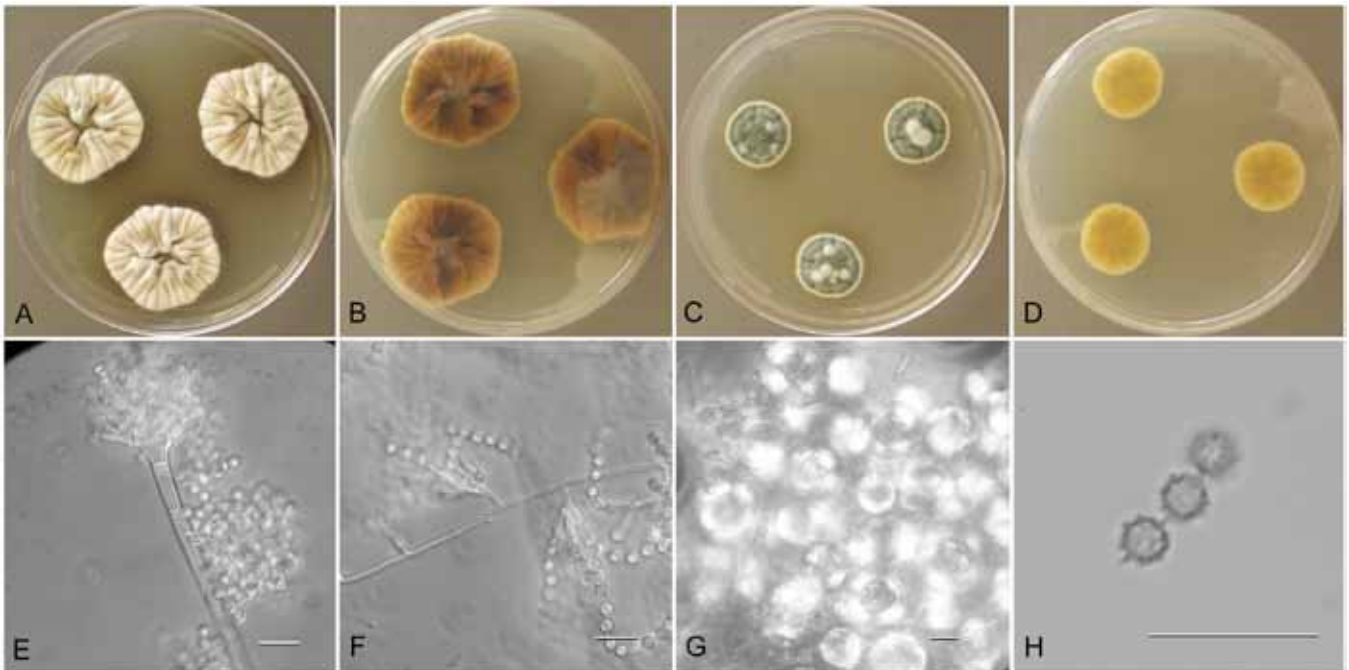


Fig. 15. *Aspergillus venenatus* (NRRL 13147), culture plates are 9 cm diam, colonies grown at 25 °C for 10 d. a. CYA colonies. b. CYA colony reverse. c. MEA colonies. d. MEA colony reverse. e. Smooth stipe, spatulate vesicle, and conidia, bar=10 µm. f. Penicillate conidiogenous cells on aerial hyphae, bar=10 µm. g. Globose hülle cells, bar=10 µm. h. Globose, spinulose conidia, bar=10 µm.

Diagnosis: Producing spinulose conidia, no growth at 37 °C, producing no exudate or soluble pigments on CYA or MEA.

Description: Colonies grown 10 d on CYA at 25 °C (Fig. 15a–b) attained 22–31 mm diam, radially sulcate, sporulating centrally in artemisia green (R47) to deep bluish gray-green (R42) in one isolate, no exudate, no soluble pigment, reverse deep olive buff to tawny or brown (R15). Colonies grown 10 d on MEA at 25 °C (Fig. 15c–d) attained 17–24 mm diam, lightly sulcate, low, central tufted funicular aggregates of aerial hyphae, sporulating well in deep green color near slate green (R47), no exudate, no soluble pigment, reverse pale lemon yellow, chamois, or light olive drab. Incubation for 7 d on CYA at 5 °C or 37 °C produced no growth or germination of conidia.

Stipes (Fig. 15e) smooth walled, hyaline to yellow with brownish shades, (20–)100–400(–500) × 4–7 µm, **vesicles** pyriform to spatulate, (6–)9–17(–21) µm diam, **conidial heads** biseriolate, **metulae** covering half to entire vesicle, (3–)4–7(–9) × 2.5–4(–5) µm, **phialides** (5–)6–8(–11) × 2–3(3.5) µm, fragmentary heads resembling penicillate fructifications (Fig. 15f) commonly present, **hülle cells** (Fig. 15g) spherical, present in some isolates, **conidia** (Fig. 15h) spherical to subspherical, occasionally ellipsoidal to pyriform, 3–4(–6) µm diam, spinulose.

Phenotypic species recognition.

Growth rates of species on different media are presented in Table 2.

Phenotypic recognition of species in section *Versicolores* is based on smooth, roughened or spinulose conidia, conidial color, exudate and soluble pigment colors on CYA and MEA, growth rates and ability to grow at 37 °C, and on the uniform presence of hülle cells in one species.

Aspergillus cvjetkovicii, *A. sydowii* and *A. venenatus* isolates produce spinulose conidia. *A. sydowii* isolates grow at 37 °C, while *A. cvjetkovicii* and *A. venenatus* isolates do not. *A. cvjetkovicii* isolates produce reddish exudate and soluble pigment on CYA, while *A. venenatus* isolates produce no exudate or soluble pigment.

Aspergillus amoenus, *A. austroafricanus* and *A. tabacinus* produce smooth-walled conidia. Of these only *A. amoenus* isolates grow at 37 °C. *A. tabacinus* isolates produce no soluble pigment and *A. austroafricanus* produces reddish brown soluble pigment when grown on CYA.

The remaining eight species produce conidia with noticeably roughened walls, but the ornamentation is not pronounced enough to be considered spinulose. Two of the eight species, *A. versicolor* and *A. fructus*, have roughened conidial walls and grow at 37 °C. These two species are very similar but have somewhat distinct stipe lengths of 150–400 µm in *A. fructus* versus 200–750 µm in *A. versicolor*. We examined only two *A. fructus* isolates and five *A. versicolor* isolates and while separation of these species using phenotype on standard media appears possible, until more isolates are seen, it is recommended that strains be identified from gene sequences such as beta tubulin or calmodulin. Genealogical concordance species recognition clearly distinguishes these sibling species (Fig. 1).

Species with roughened conidia that do not grow at 37 °C are *A. protuberus*, *A. creber*, *A. jensenii*, *A. puulaauensis*, *A. subversicolor* and *A. tennesseensis*. *Aspergillus protuberus* isolates on CYA produce a red exudate (near scarlet R1) and a vinaceous or yellow soluble pigment, and MEA cultures are foccose. *A. jensenii* isolates produce brown CYA colony reverse colors from tawny olive to dark umber, and conidial color is near celandine green (R47). All *A. puulaauensis* isolates produce spherical hülle cells when

Table 2. Colony diameters (mm) of section *Versicolores* species on various media after 7d. Incubation at 25 °C except where noted.

Species	CYA	MEA	CY20	M40Y	M60Y	CYA at 37 °C
<i>A. amoenus</i>	20–29	11–15	11–20	14–22	15–24	6
<i>A. austroafricanus</i>	18–19	16–17	24–25	18–19	17–18	-
<i>A. creber</i>	17–23	11–15	15–22	18–23	19–24	-
<i>A. cvjetkovicii</i>	15–21	14–17	17–20	16–24	15–25	-
<i>A. fructus</i>	13–20	10–16	9–17	10–23	10–20	4
<i>A. jensenii</i>	16–20	9–13	15–20	21–26	22–28	-
<i>A. protuberus</i>	17–25	11–18	14–22	21–24	20–24	-
<i>A. puulaaensis</i>	18–21	11–12	17–19	19–22	18–21	-
<i>A. subversicolor</i>	13–14	6–7	10–11	15–16	16–18	-
<i>A. sydowii</i>	20–25	20–25	21–26	23–26	23–27	8
<i>A. tabacinus</i>	21–26	12–16	21–26	8–23	8–23	-
<i>A. tennesseensis</i>	20–22	12–14	17–19	19–22	19–22	-
<i>A. venenatus</i>	14–17	8–10	15–16	19–23	17–21	-
<i>A. versicolor</i>	20–26	10–18	19–22	21–26	22–25	8

Table 3. Predicted species identity based on ITS genotype and correlation of ITS genotypes and species in section *Versicolores*. ITS genotypes were assigned arbitrary letter designations and species are determined by genealogical concordance.

ITS genotype	Predicted species
A	<i>A. amoenus</i> , <i>A. fructus</i> , <i>A. protuberus</i> , <i>A. tabacinus</i> , <i>A. versicolor</i>
B	<i>A. subversicolor</i>
C	<i>A. austroafricanus</i>
D	<i>A. cvjetkovicii</i> , <i>A. jensenii</i> , <i>A. tennesseensis</i> , <i>A. venenatus</i>
E	<i>A. sydowii</i>
F	<i>A. sydowii</i>
G	<i>A. amoenus</i>
H	<i>A. tabacinus</i>
I	<i>A. creber</i> , <i>A. versicolor</i>
J	<i>A. puulaaensis</i>
K	<i>A. creber</i>
L	<i>A. creber</i>
M	<i>A. jensenii</i>
N	<i>A. creber</i>

grown on M40Y medium and the species is distinguished by this consistent character. One isolate each of *A. versicolor* and *A. amoenus* (both grow at 37 °C) and one isolate of *A. jensenii* also produced hülle cells on M40Y. *A. subversicolor* isolates are relatively slow growing on MEA and M40Y (Table 2) and produce faint yellow soluble pigment on CYA. *A. tennesseensis*, when grown on MEA produce very dark green conidial areas (near slate green R47) not produced by other rough-spored species in the section. *Aspergillus creber* isolates produce no soluble pigment on either CYA or MEA, and conidial color on either medium is pea green to sage green (R47).

There is considerable variation in colony appearance within species and considerable overlap in colony appearance between species, making species separation within section *Versicolores* challenging. In addition, some of the isolates included in this study were propagated *in vitro* for several

decades prior to preservation by lyophilization. Among those isolates, several appear to have mutated and consequently produce colonies that have a wet appearance when grown on CYA or produce only moist aerial aggregates of hyphae with little sporulation. Identification of these degenerate strains relies on DNA sequence analysis. DNA sequence analysis is the most reliable means for identifying species within this section.

ITS region genotypes from species in section *Versicolores* are presented in Table 3. Some genotypes are shared by two or more species. Genotype A is present in isolates of five different species and genotype D is present in four different species of the section. Isolates of some species, such as *A. creber* (genotypes I, K, L, N), display two to four ITS genotypes within species.

DISCUSSION

Initial phenotypic examination of *Aspergillus* section *Versicolores* isolates was made using CYA cultures grown for 7 d at 25 °C (Klich & Pitt 1988). Those cultures did not provide sufficient data to reliably identify the species. Subsequently we tried culturing the isolates for 10 d at 25 °C on CYA to allow for further development of exudate, soluble pigment and conidial color. Raper & Fennell (1965) used incubation times of generally 10–14 d. We found that incubation for 10 d is necessary for characterizing isolates of section *Versicolores*.

Only four of the available genetic loci were used in preparing the combined data tree (Fig. 1). The ITS region was not included because it contained few informative nucleotides and because its veracity as a phylogenetic indicator is questionable (Galagan *et al.* 2005). The ITS data themselves however may be of interest for bar-coding studies (discussed later). The beta tubulin sequences from section *Versicolores* are of the “two intron” type and probably have a different evolutionary origin than the “three intron” type of beta tubulin found in the out-group species (Peterson 2008). Because of the suspected paralogy of this molecule, it was not included in the combined data tree. It was included as a possible target for DNA sequence-based identification of isolates.

Henig (1966) in his work on systematics required that all taxa be monophyletic. When working with phenotypic characters in section *Versicolores*, it was difficult to identify the informative characters that could satisfy Henig's requirement. Analysis of DNA sequences from unlinked loci using concordance (Taylor *et al.* 2000, Dettman *et al.* 2003) makes it possible to define monophyletic groups. Phylogenetic recognition of species occasionally makes it necessary to accept cryptic species (Perrone *et al.* 2011) because the phenotypic characters of the species overlap with their siblings to such an extent that the species cannot be reliably identified without molecular tools. For NRRL 530 and NRRL 13151 that form single isolate lineages, reliable characters to define the species have not been found, but with the identification of additional isolates it may be possible to phenotypically characterize and subsequently name these species. For *A. versicolor* and *A. fructus* the limited number of isolates and the observed intraspecific variation reduce confidence in the current phenotypic recognition of the species, but the phylogenetic data are unequivocal and so *A. fructus* was described as new.

Prior to this publication *A. versicolor* was a species with documented genetic and phenotypic variation that did not resolve into clearly recognizable species. Fourteen species are now known in section *Versicolores* and the ITS region variation is ca. 3 % as calculated from the data herein. By comparison ca. 4 % variation is found in the *Petromyces* clade (*Aspergillus* sect. *Flavi*) between *P. flavus* and *P. nomius* and 14 species have been named (Varga *et al.* 2009). In the *Petromyces* clade, one species may possess a phenotype very similar to another species (Kurtzman *et al.* 1987, Peterson *et al.* 2001, Soares *et al.*, 2012). While the validity of some species in the *Petromyces* clade have been questioned (Varga *et al.* 2009), phylogenetic distinction has served to validate species (Peterson 2008, Varga

et al. 2009) regardless of the phenotypic similarities or overlapping character states of the species. Peterson (2008) suggested that sect. *Versicolores* could easily be dropped from *Aspergillus* taxonomy. This much broader study of *A. versicolor sensu lato* isolates suggests that section *Versicolores* should be retained as a monophyletic and useful subgeneric designation.

Aspergillus versicolor is the most reported fungal species in section *Versicolores* from damp indoor environments (Jussila 2003, Rydjord *et al.* 2005) and its presence is used as an indicator of Sick Building Syndrome (SBS) (Schwab & Straus 2004). We amplified each newly described species using *A. versicolor*-specific primers (Dean *et al.* 2005; data not shown) and obtained a positive signal in all cases except for *A. subversicolor* and *A. sydowii*; therefore the primer set retains its usefulness. In *A. creber* and *A. jensenii* some isolates did not amplify even though the genotypes were identical with isolates that did amplify, suggesting degradation or incorrect quantitation of the genomic DNA.

Twenty-four sect. *Versicolores* isolates in this study were obtained by one of us (ZJ) from air samples in buildings, but none comprised *A. versicolor sensu stricto* (Table 1). Of the five *A. versicolor* isolates examined, three were isolated from a single lot of toxic cattle feed in the USA and the substrate for the other two isolates, one from the USA and the other from South Africa, was not recorded. The species is widespread geographically, but was not commonly encountered among the isolates used in this study. *Aspergillus creber* was the most frequently isolated species from indoor air samples in the USA (13 strains from six states), followed by *A. protuberus* (five strains from two states) and *A. jensenii* (four strains from three states). *Aspergillus versicolor sensu stricto* may not be common in buildings. Two other species, *A. cvjetkovicii* and *A. puulaauensis*, were each isolated once from indoor air. The other newly described species, *A. fructus*, *A. austroafricanus*, *A. subversicolor*, *A. tennesseensis* and *A. venenatus*, were isolated from plant material or had unknown sources (Table 1). Amend *et al.* (2010) reported that fungi isolated from indoor air sources (e.g., dust, carpet) are highly diverse in the temperate regions of the world and are much less diverse in tropical regions. Therefore, our strains from indoor air samples from the USA in addition to culture collection strains from many regions of the world may represent much of the diversity present in section *Versicolores*.

There is considerable interest in using ITS sequences for bar-coding identification of fungi, particularly for large-scale ecological studies (Begerow *et al.* 2010, Schoch *et al.* 2012). In section *Versicolores* species, one particular ITS genotype is present in isolates of five different species and another genotype is found in four different species (Table 3). Because ITS genotypes do not uniquely identify species in this section, use of multiple loci is the most reliable means of DNA sequence-based identification in section *Versicolores* (Peterson 2012).

Viable propagules of *A. versicolor* have been recovered from the highly saline Dead Sea (Kis-Papo *et al.* 2003), showing an ability to survive conditions of salinity or drying. The ARS Culture Collection contains a few putative *A. versicolor* isolates obtained from brined meats in the UK. Upon sequence and phenotypic analysis, these isolates were

identified as three species, *A. amoenus*, *A. tabacinus* and *A. protuberus*, all of which occur in the *A. versicolor* subclade (Fig. 1). Additionally, *A. creber* NRRL 6544, from the *A. sydowii* subclade, was isolated from a tar ball floating in the Atlantic Ocean. High tolerance to salinity may extend to other species in section *Versicolores*. *Aspergillus versicolor* has also been identified from dust collected in the International Space Station (Vesper *et al.* 2008). In addition to CYA and MEA we used high sugar content media (CY20S, M40Y and M60Y) containing 20, 40 or 60 % sucrose, respectively. All isolates grew well on all of the media (Table 2), with no noticeable reduction in growth rates even on M60Y medium. Species from section *Versicolores* have a remarkably broad tolerance for a wide range of water activity of their substrates.

Aspergillus versicolor isolates produce the aflatoxin precursor sterigmatocystin, a compound that is mutagenic and tumorigenic (Veršilovskis & Saeger 2010). Animal feed infested with three morphotypes of *A. versicolor*, all of which produce sterigmatocystin, have been implicated in dairy animal toxicosis, but it is unknown whether sterigmatocystin caused the toxicosis (Vesonder & Horn 1985). Those three morphotypes are now identified as *A. versicolor*, *A. tennesseensis* and *A. venenatus*, and as these species occur in the two main subclades of section *Versicolores* (Fig. 1), sterigmatocystin production may be present in additional species. The distribution of section *Versicolores* species in agricultural commodities and their role in stigmatocystin toxicoses require additional study. In addition to sterigmatocystin, recent studies have revealed numerous metabolites with biological activities (Finefeld *et al.* 2011, Lee *et al.* 2011) from *A. versicolor sensu lato* Jaio *et al.* (2007) discovered novel nucleotide analogs from *A. puulaauensis* which was reported under the name *A. versicolor*.

Aspergillus versicolor has been implicated as the causative agent of disseminated aspergillosis in dogs (Zhang *et al.* 2012), has probably caused aspergillosis in transplant recipients (Baddley *et al.* 2009), and has been isolated from the infected eye of a patient suffering from HIV (Perri *et al.* 2005). We included two section *Versicolores* clinical isolates in our study. NRRL 254 was identified as *A. sydowii* and NRRL 226, originally identified as *A. versicolor*, is here identified as *A. amoenus*. Because of different sensitivities of fungal species to fungal antibiotics, a more detailed study of *A. versicolor* clinical isolates might be of value to guide appropriate therapeutic regimens (Pfaller *et al.* 2011).

ACKNOWLEDGEMENTS

We thank Amy E. McGovern for valuable technical support. Patricia Eckel kindly advised us on Latin usage. David L. Hawksworth advised us on some nomenclatural issues. The authors thank Donald T. Wicklow (USDA, Peoria, IL) and Lynne Sigler (University of Alberta, Edmonton, Alberta) for the gift of Hawaiian and Canadian isolates. Mention of a trade name, proprietary product, or specific equipment does not constitute a guarantee or warranty by the United States Department of Agriculture and does not imply its approval to the exclusion of other products that may be suitable. USDA is an equal opportunity provider and employer.

REFERENCES

- Amend AS, Seifert KA, Samson R, Bruns TD (2010) Indoor fungal composition is geographically patterned and more diverse in temperate zones than in the tropics. *Proceedings of the National Academy of Sciences, USA* **107**: 13748–13753.
- Anderson B, Frisvad JC, Sondergaard I, Rasmussen IB, Larsen LS (2011) Associations between fungal species and water-damaged building materials. *Applied and Environmental Microbiology* **77**: 4180–4188.
- Baddley JW, Marr KA, Andes DR, Walsh TJ, Kauffman CA, Kontoyiannis DP, Ito JI, Balajee SA, Pappas PG, Moser SA (2009) Patterns of susceptibility of *Aspergillus* isolates recovered from patients enrolled in the transplant-associated infection surveillance network. *Journal of Clinical Microbiology* **47**: 3271–3275.
- Baum DA, Shaw KL (1995) Genealogical perspectives on the species problem. In: *Experimental and Molecular Approaches to Plant Biosystematics* (PC Hoch & AG Stephenson, eds): 289–303. St Louis, Mo: Missouri Botanical Garden.
- Begerow D, Nilsson H, Unterseher M, Maier W. (2010) Current state and perspectives of fungal DNA barcoding and rapid identification procedures. *Applied Microbiology and Biotechnology* **87**: 99–108.
- Dean TR, Roop B, Betancourt D, Menetrez MY (2005) A simple multiplex polymerase chain reaction assay for the identification of four environmentally relevant fungal contaminants. *Journal of Microbiological Methods* **61**: 9–16.
- Dettman JR, Jacobson DJ, Turner E, Pringle A, Taylor JW (2003) Reproductive isolation and phylogenetic divergence in *Neurospora*: comparing methods of species recognition in a model eukaryote. *Evolution* **57**: 2721–2741.
- Domsch KH, Gams W, Anderson TH (1980) *Compendium of Soil Fungi* Vol. 1. Academic Press, UK.
- Edmondson DA, Barrios CS, Brasel TL, Straus DC, Kurup VP, Fink JN (2009) Immune response among patients exposed to molds. *International Journal of Molecular Sciences* **10**: 5471–5484.
- Engelhart S, Looek A, Skutlarek D, Sagunski H, Lommel A, Farber H, Exner M (2002) Occurrence of toxigenic *Aspergillus versicolor* isolates and sterigmatocystin in carpet dust from damp indoor environments. *Applied and Environmental Microbiology* **68**: 3886–3890.
- Finefeld JM, Sherman DH, Tsukamoto S, Williams RM (2011) Studies on the biosynthesis of the notoamides: synthesis of an isotopomer of 6-hydroxydeoxybrevianamide E and biosynthetic incorporation into notoamide J. *Journal of Organic Chemistry* **76**: 5954–5958.
- Galagan JE, Calvo SE, Cuomo C, Ma L-J, Wortman JR, Batzoglou S, Lee S-I, Batürkmen M, Spevak CC, Clutterbuck J, Kapitonov V, Jurka J, Scacciocchio C, Farman M, Butler J, Purcell S, Harris S, Braus GH, Draht O, Busch S, D'Enfert C, Bouchier C, Goldman GH, Bell-Pedersen D, Griffiths-Jones S, Doonan JH, Yu J, Vienken K, Pain A, Freitag M, Selker EU, Archer DB, Peñalva MA, Oakley BR, Momany M, Tanaka T, Kumagai T, Asai K, Machida M, Nierman WC, Denning DW, Caddick M, Hynes M, Paoletti M, Fischer R, Miller B, Dyer P, Sachs MS, Osmani SA, Birren BW (2005) Sequencing of *Aspergillus nidulans* and comparative analysis with *A. fumigatus* and *A. oryzae*. *Nature* **438**: 1105–1115.
- Gams W, Christensen M, Onions AHS, Pitt JI, Samson RA (1985) Infrageneric taxa of *Aspergillus*. In: *Advances in Penicillium and*

- Aspergillus Systematics* (RA Samson & JI Pitt, eds): 55–64. New York: Plenum Press.
- Hennig W (1966) *Phylogenetic Systematics*. [English translation.] Urbana, IL: University of Illinois Press.
- Huelsenbeck JP, Ronquist F (2001) MRBAYES: Bayesian inference of phylogenetic trees. *Bioinformatics* **17**: 754–755.
- Jiao P, Murdur SV, Gloer JB, Wicklow DT (2007) Kipukasins, nucleoside derivatives from *Aspergillus versicolor*. *Journal of Natural Products* **70**: 1308–1311.
- Jussila J (2003) *Inflammatory Responses in Mice after Intratracheal Instillation of Microbes Isolated from Moldy Buildings*. Helsinki, Finland: National Public Health Institute.
- Kis-Papo T, Kirzhner V, Wasser SP, Nevo, E (2003) Evolution of genomic diversity and sex at extreme environments: fungal life under hypersaline Dead Sea stress. *Proceedings of the National Academy of Sciences, USA* **100**: 14970–14975.
- Klich MA (1993) Morphological studies of *Aspergillus* section *Versicolor* and related species. *Mycologia* **85**: 100–107.
- Klich MA (2002) *Identification of Common Aspergillus Species*. Utrecht: Centraalbureau voor Schimmelcultures.
- Klich MA, Pitt JI (1988) *A Laboratory Guide to Common Aspergillus Species and Their Teleomorphs*. North Ryde, NSW: CSIRO.
- Kozakiewicz Z (1989) *Aspergillus* species on stored products. *Mycological Papers* **161**: 1–188.
- Kurtzman CP, Horn BW, Hesseltine CW (1987) *Aspergillus nomius*, a new aflatoxin-producing species related to *Aspergillus flavus* and *Aspergillus tamarii*. *Antonie van Leeuwenhoek* **53**: 147–158.
- Lee YM, Dang HT, Li J, Zhang P, Hong J, Lee CO, Jung JH (2011) A cytotoxic fellutamide analogue from the sponge-derived fungus *Aspergillus versicolor*. *Bulletin of the Korean Chemical Society* **32**: 3817–3820.
- Mbata TI (2008) Isolation of fungi in hyper saline Dead Sea water. *Sudanese Journal of Public Health* **3**: 170–172.
- Mills JT, Abramson D (1986) Production of sterigmatocystin by isolates of *Aspergillus versicolor* from western Canadian stored barley and rapeseed/canola. *Canadian Journal of Plant Pathology* **82**: 151–153.
- Moreno G, Arenas R. (2010) Other fungi causing onychomycosis. *Clinics in Dermatology* **28**: 160–163.
- Nielsen KF (2003) Mycotoxin production by indoor molds. *Fungal Genetics and Biology* **39**: 103–117.
- Perri P, Campa C, Incorvaia C, Parmeggiani F, Lamberti G, Costagliola C, Sebastian A (2005) Endogenous *Aspergillus versicolor* endophthalmitis in an immuno-competent HIV-positive patient. *Mycopathologia* **160**: 259–261.
- Perrone G, Stea G, Epifani F, Varga J, Frisvad JC, Samson RA (2011) *Aspergillus niger* contains the cryptic phylogenetic species *A. awamori*. *Fungal Biology* **115**: 1138–1150.
- Peterson SW (2008) Phylogenetic analysis of *Aspergillus* species using DNA sequences from four loci. *Mycologia* **100**: 205–226.
- Peterson SW (2012) *Aspergillus* and *Penicillium* identification using DNA sequences: barcode or MLST? *Applied Microbiology and Biotechnology* DOI 10.1007/s00253-012-4165-2.
- Peterson SW, Ito Y, Horn BW, Goto T. (2001) *Aspergillus bombycis*, a new aflatoxigenic species and genetic variation in its sibling species, *A. nomius*. *Mycologia* **93**: 689–703.
- Peterson SW, Jurjevic Z, Bills GF, Stchigel AM, Guarro J, Vega FE (2010) The genus *Hamigera*, six new species and multilocus DNA sequence based phylogeny. *Mycologia* **102**: 847–864.
- Pfaller MA, Castanheira M, Diekema DJ, Messer SA, Jones RN (2011) Triazole and echinocandin MIC distributions with epidemiological cutoff values for differentiation of wild-type strains from non-wild-type strains of six uncommon species of *Candida*. *Journal of Clinical Microbiology* **49**: 3800–3804.
- Pitt JI (1980) [“1979”] *The Genus Penicillium and Its Teleomorph States Eupenicillium and Talaromyces*. London: Academic Press.
- Pitt JI, Hocking AD (2009) *Fungi and Food Spoilage*. 3rd edn. London: Springer Verlag.
- Raper KB, Fennell DI (1965) *The Genus Aspergillus*. Baltimore, MD: Williams & Wilkins.
- Ridgway R (1912) *Color Standards and Color Nomenclature*. Washington, DC: Ridgway.
- Ronquist F, Huelsenbeck JP (2003) MrBayes3: Bayesian phylogenetic inference under mixed models. *Bioinformatics* **19**: 1572–1574.
- Rydjord B, Hetlandy G, Wikerz HG (2005) Immunoglobulin G antibodies against environmental moulds in a Norwegian healthy population shows a bimodal distribution for *Aspergillus versicolor*. *Scandinavian Journal of Immunology* **62**: 281–288.
- Samson RA, Houbraken J, Summerbell RC, Flannigan B, Miller JD (2001) Common and important species of fungi and actinomycetes in indoor environments. In: *Microorganisms in Home and Indoor Work Environments* (B. Flannigan, RA Samson & JD Miller, eds): 287–292. London: Taylor and Francis.
- Schoch CL, Seifert KA, Huhndorf S, Robert V, Souge JL, Levesque CA, Chen W, Fungal Barcoding Consortium (2012) Nuclear ribosomal internal transcribed spacer (ITS) region as a universal DNA barcode marker for *Fungi*. *Proceedings of the National Academy of Sciences, USA* **109**: 6241–6246.
- Schwab CJ, Straus DC (2004) The roles of *Penicillium* and *Aspergillus* in sick building syndrome. *Advances in Applied Microbiology* **55**: 215–238.
- Shelton BG, Kirkland KH, Dana W (2002) Profiles of airborne fungi in buildings and outdoor environments in the United States. *Applied and Environmental Microbiology* **68**: 1743–1753.
- Soares C, Rodrigues P, Peterson SW, Lima N, Venâncio A (2012) Three new species of *Aspergillus* section *Flavi* isolated from almonds and maize in Portugal. *Mycologia*: doi:10.3852/11-088.
- Swofford DL (2003) *PAUP*: Phylogenetic Analysis Using Parsimony (*and Other Methods)*. Version 4. Sunderland, MA: Sinauer Associates.
- Taylor JW, Jacobson DJ, Kroken S, Kasuga T, Geiser DM, Hibbett DS, Fisher MC (2000) Phylogenetic species recognition and species concepts in fungi. *Fungal Genetics and Biology* **31**: 21–32.
- Thom C, Church MB (1926) *The Aspergilli*. Baltimore, MD: Williams & Wilkins.
- Thom C, Raper KB (1945) *Manual of the Aspergilli*. Baltimore, MD: Williams & Wilkins.
- Thompson JD, Higgins DG, Gibson TJ (1994) CLUSTALW: improving the sensitivity of progressive multiple sequence alignments through sequence weighting, position-specific gap penalties and weight matrix choice. *Nucleic Acids Research* **22**: 4673–4680.
- Tuomi T, Reijula K, Johnsson T, Hemminki K, Hintikka EL, Lindroos O, Kalso S, Koukila-Kähkölä P, Mussalo-Rauhamaa H, Haahtela T (2000) Mycotoxins in crude building materials from water-damaged buildings. *Applied and Environmental Microbiology* **66**: 1899–1904.
- Varga J, Frisvad JC, Samson RA. (2009) A reappraisal of fungi producing aflatoxins. *World Mycotoxin Journal* **2**: 263–277

- Veršilovskis A, Saeger SD (2010) Sterigmatocystin: occurrence in foodstuffs and analytical methods – an overview. *Molecular Nutrition and Food Research* **54**: 136–147.
- Vesonder RF, Horn BW (1985) Sterigmatocystin in dairy cattle feed contaminated with *Aspergillus versicolor*. *Applied and Environmental Microbiology* **49**: 234–235.
- Vesper SJ, Wong W, Kuo CM, Pierson DL (2008) Mold species in dust from the International Space Station identified and quantified by mold-specific quantitative PCR. *Research in Microbiology* **159**: 32–435.
- Zhang S, Corapi W, Quist E, Griffin S, Zhang M (2012) *Aspergillus versicolor*, a new causative agent of canine disseminated aspergillosis. *Journal of Clinical Microbiology* **50**: 187–191.

SUPPLEMENTARY INFORMATION

ARTICLE

Supplemental Fig. 5

Tsr1 locus, 841 characters: 638 are constant, 90 are variable but parsimony-uninformative, 113 are parsimony-informative; >100 mp trees, CI=0.7882, RC=0.7523

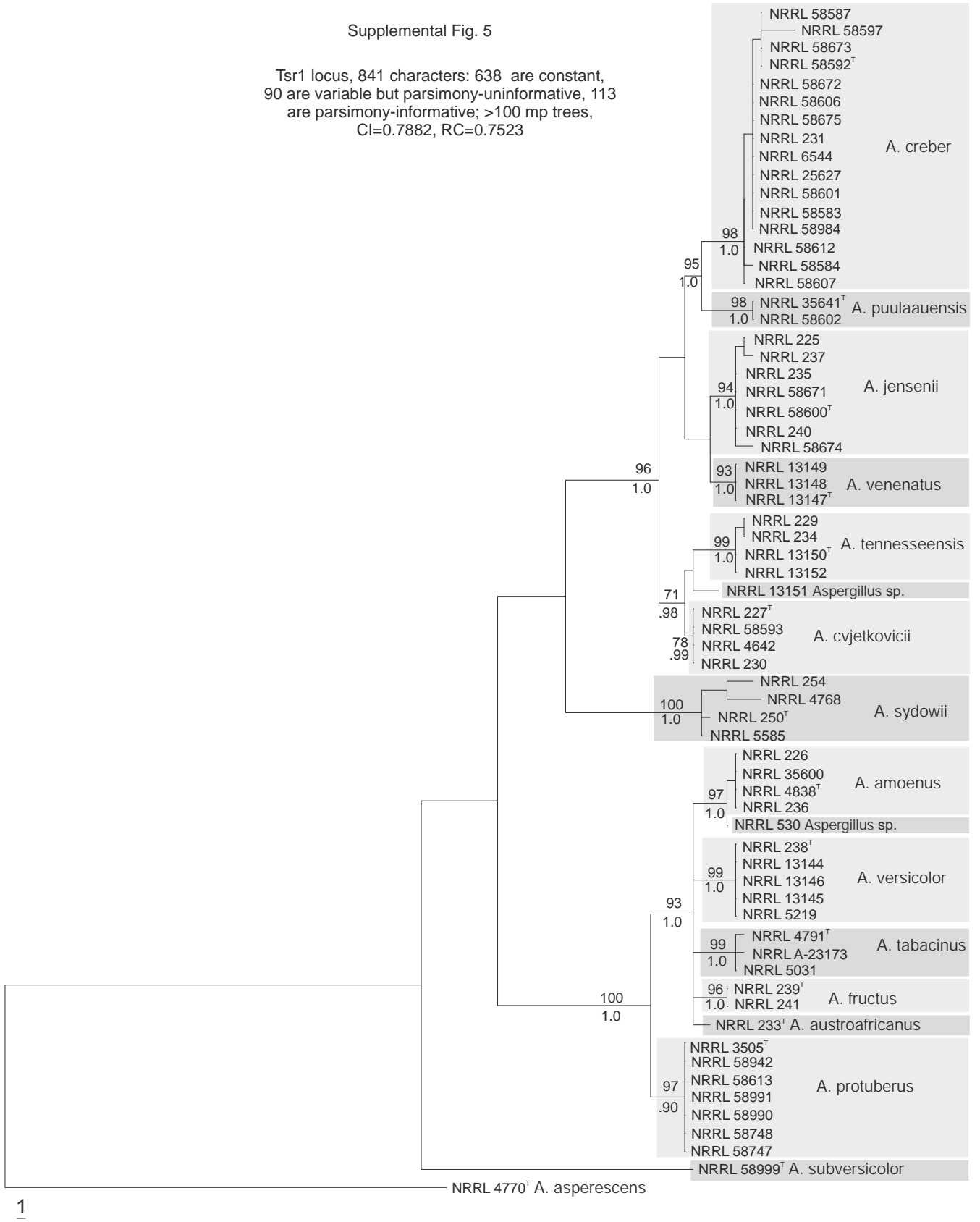


Fig. S5. Phylogenetic tree based on *Tsr1* locus sequences; Bayesian posterior probabilities and bootstrap values based on 1000 replicates are

